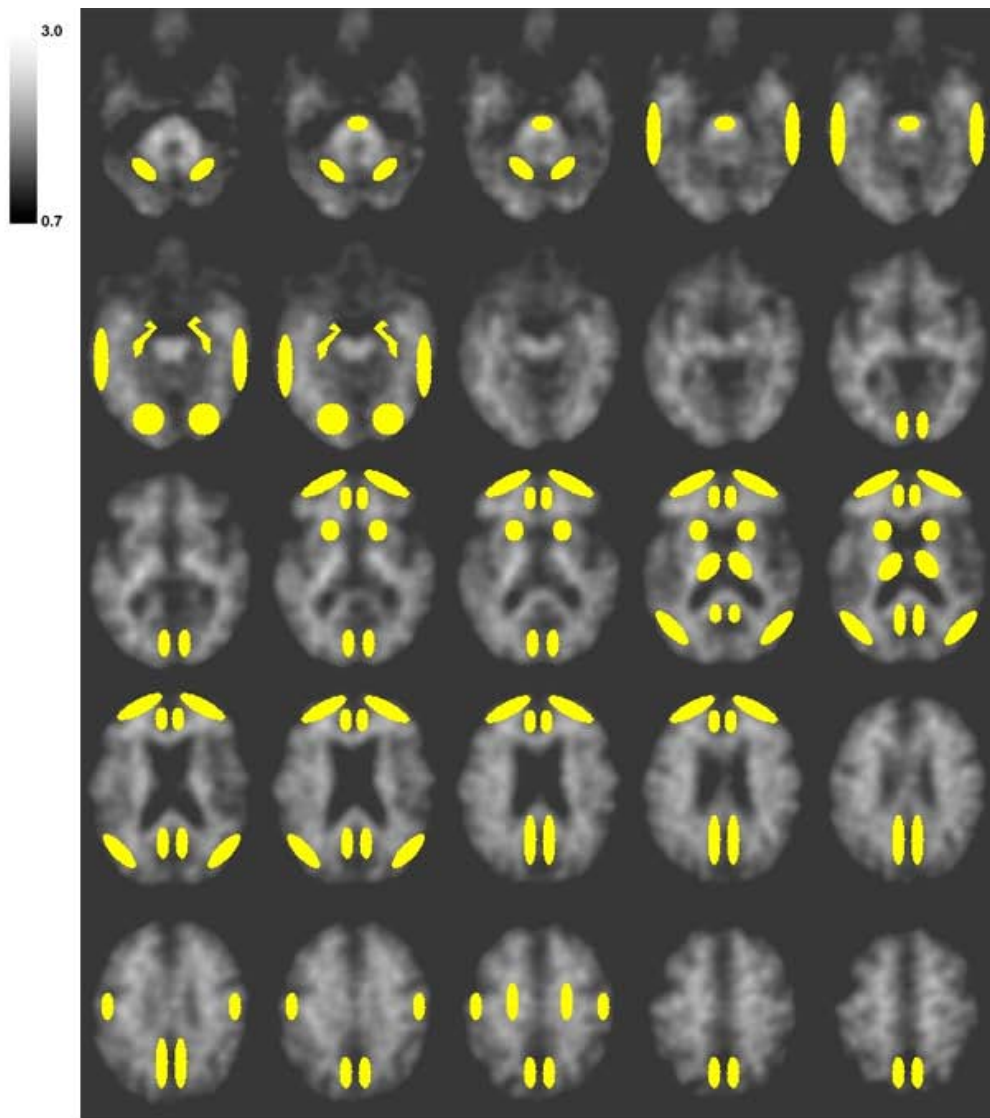
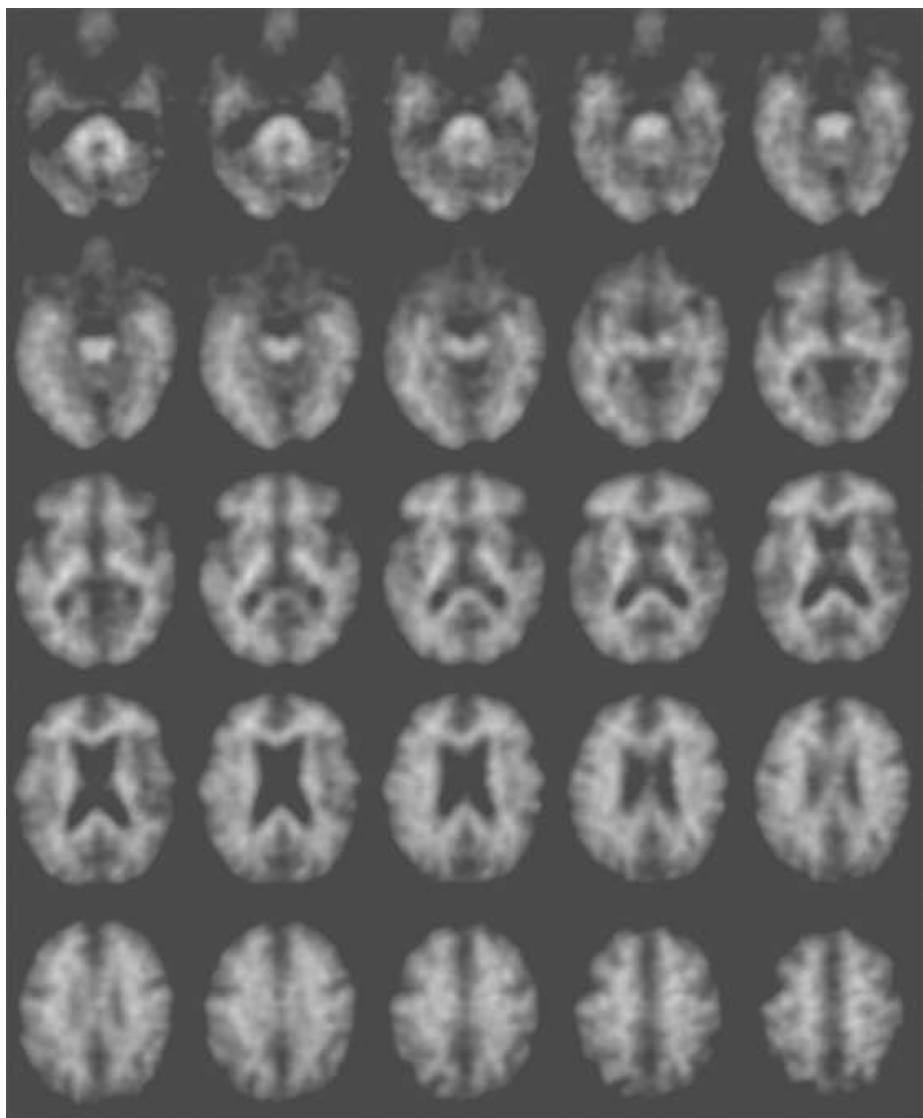


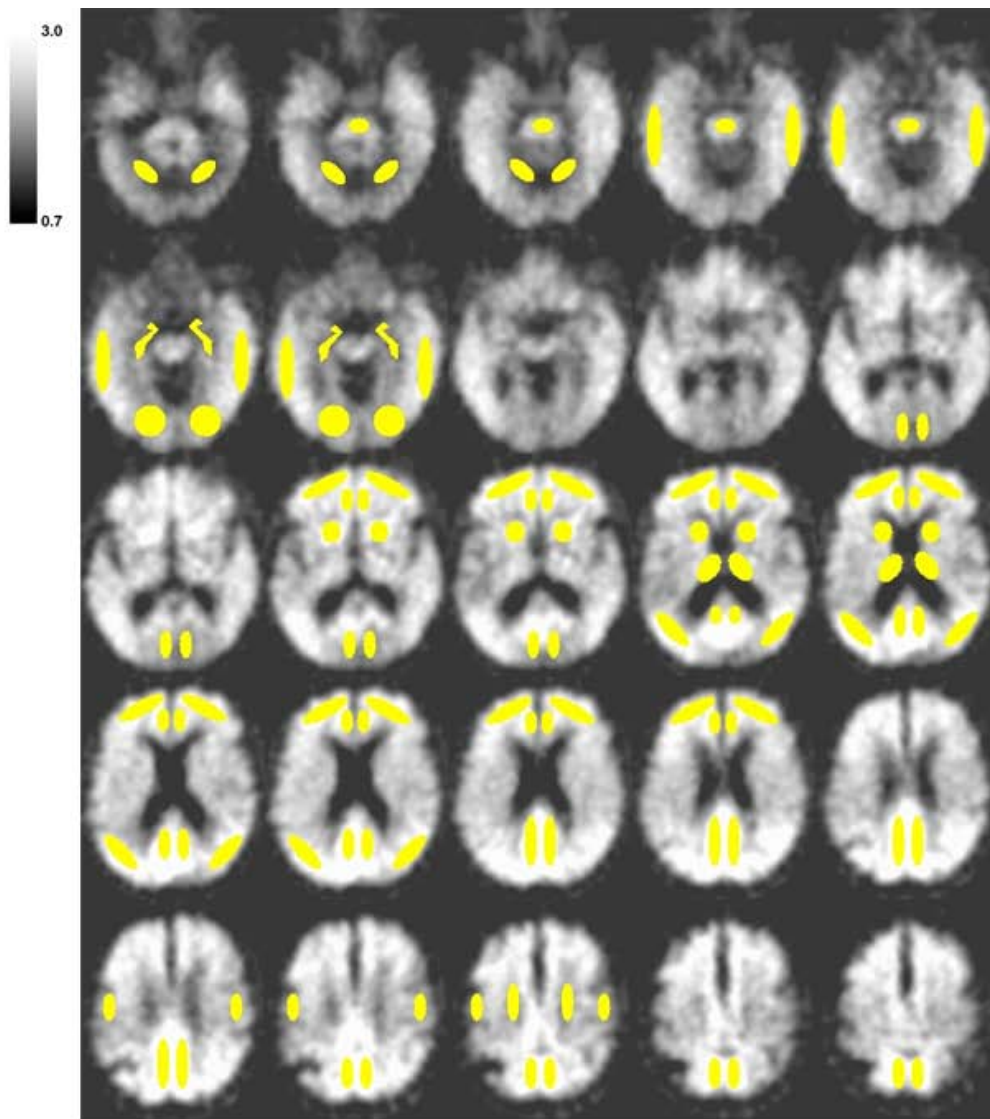
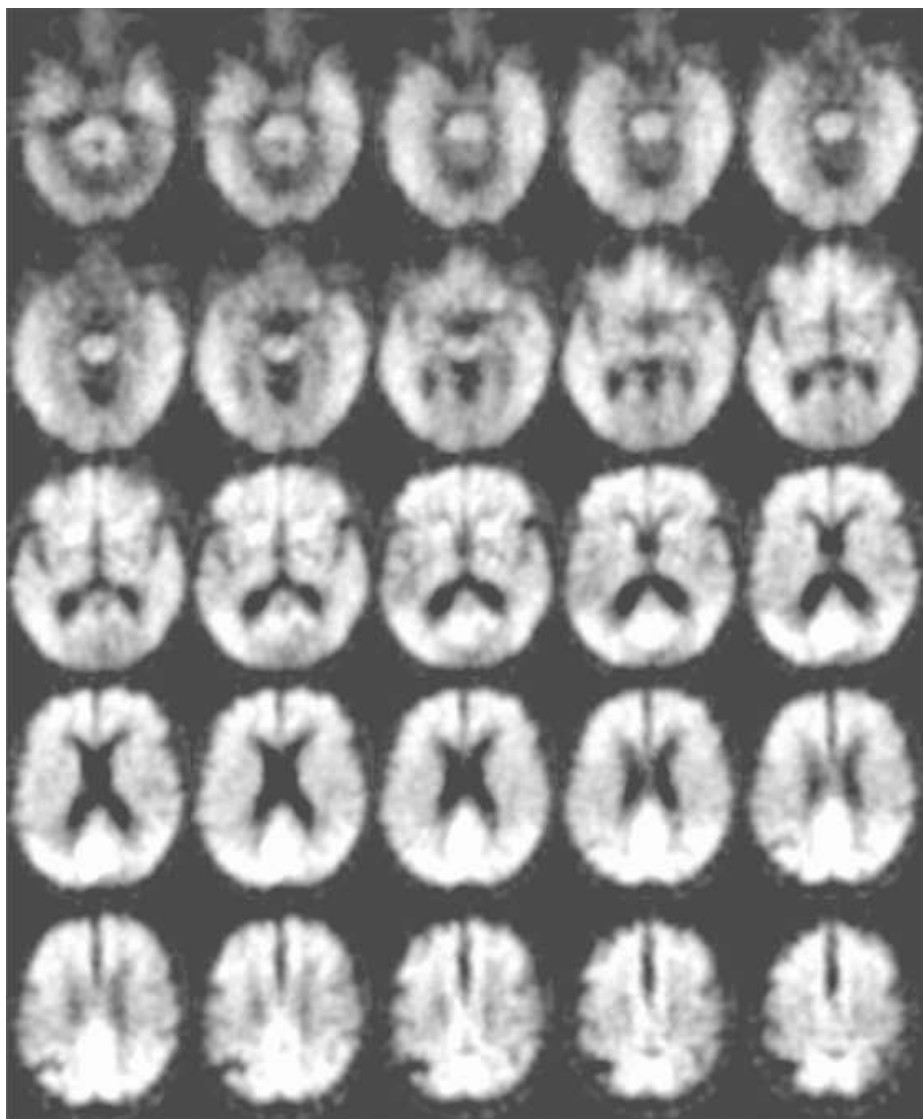
005_S_1341 AD

Subject ID	Group	ACG	FRC	LTC	PAR	PRC	MTC	OCC	OCP	PON	AVS	CER	SMC	SWM	THL
005-1341	AD	1.69	1.64	1.57	1.66	1.83	1.15	1.47	1.74	1.69	1.48	1.00	1.14	1.76	1.31



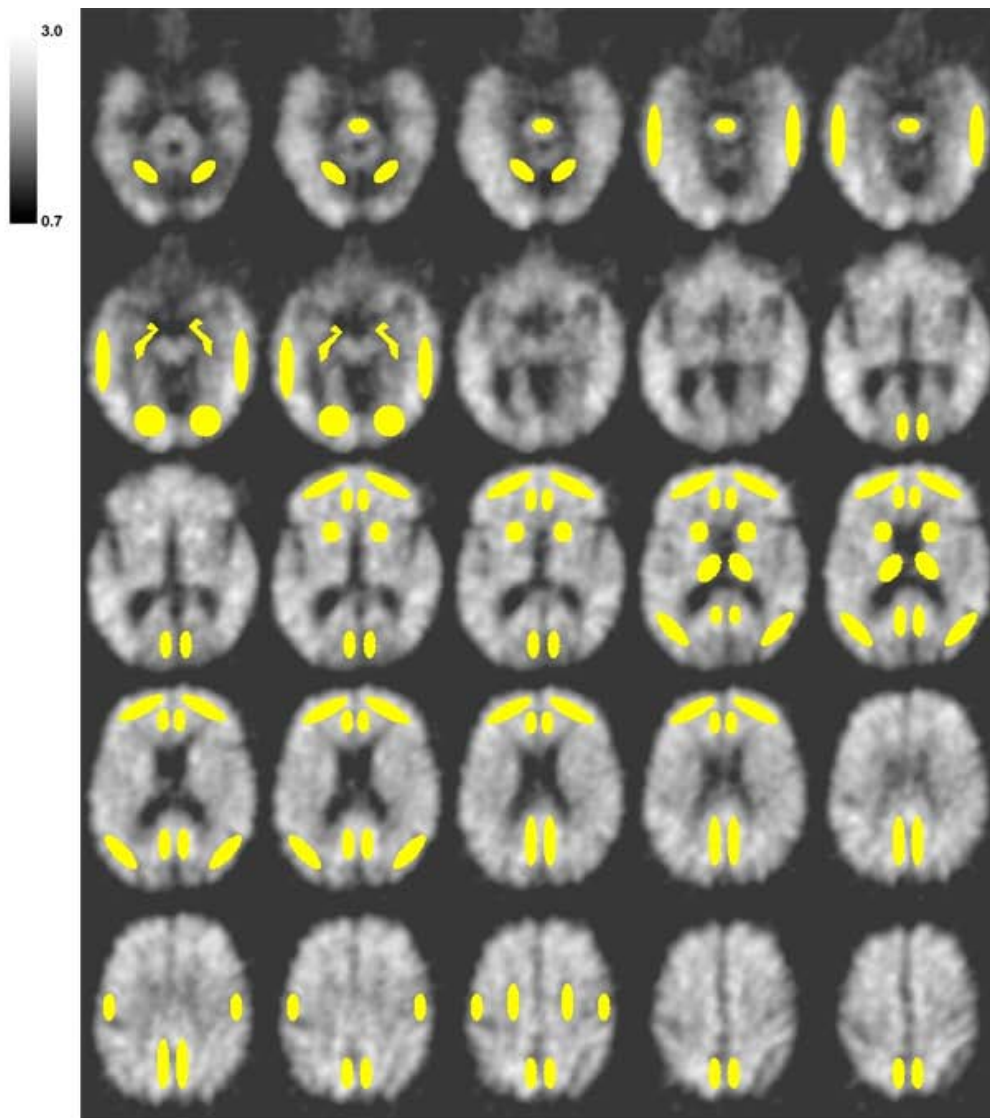
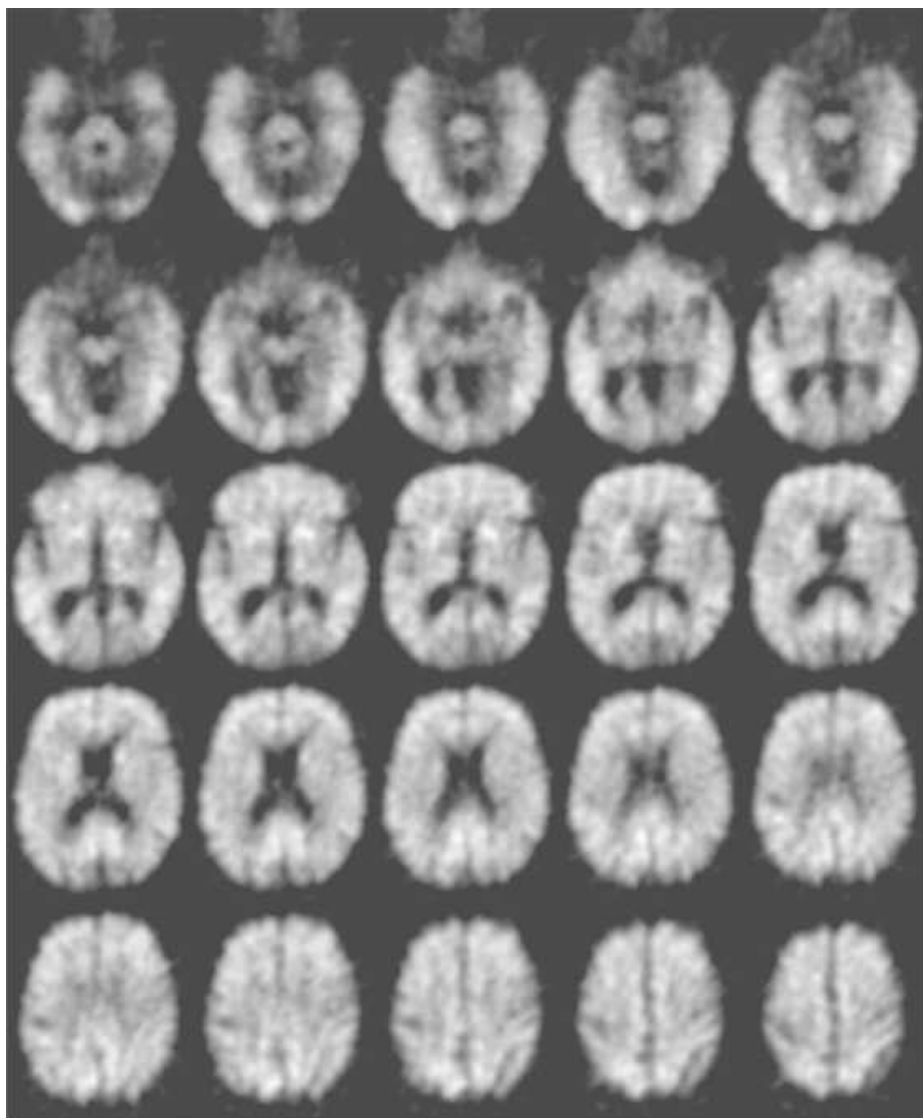
006_S_0547 AD

Subject ID	Group	ACG	FRC	LTC	PAR	PRC	MTC	OCC	OCP	PON	AVS	CER	SMC	SWM	THL
006_0547	AD	1.16	1.20	1.20	1.21	1.15	1.07	1.23	1.46	1.85	1.35	1.00	1.33	1.83	1.33



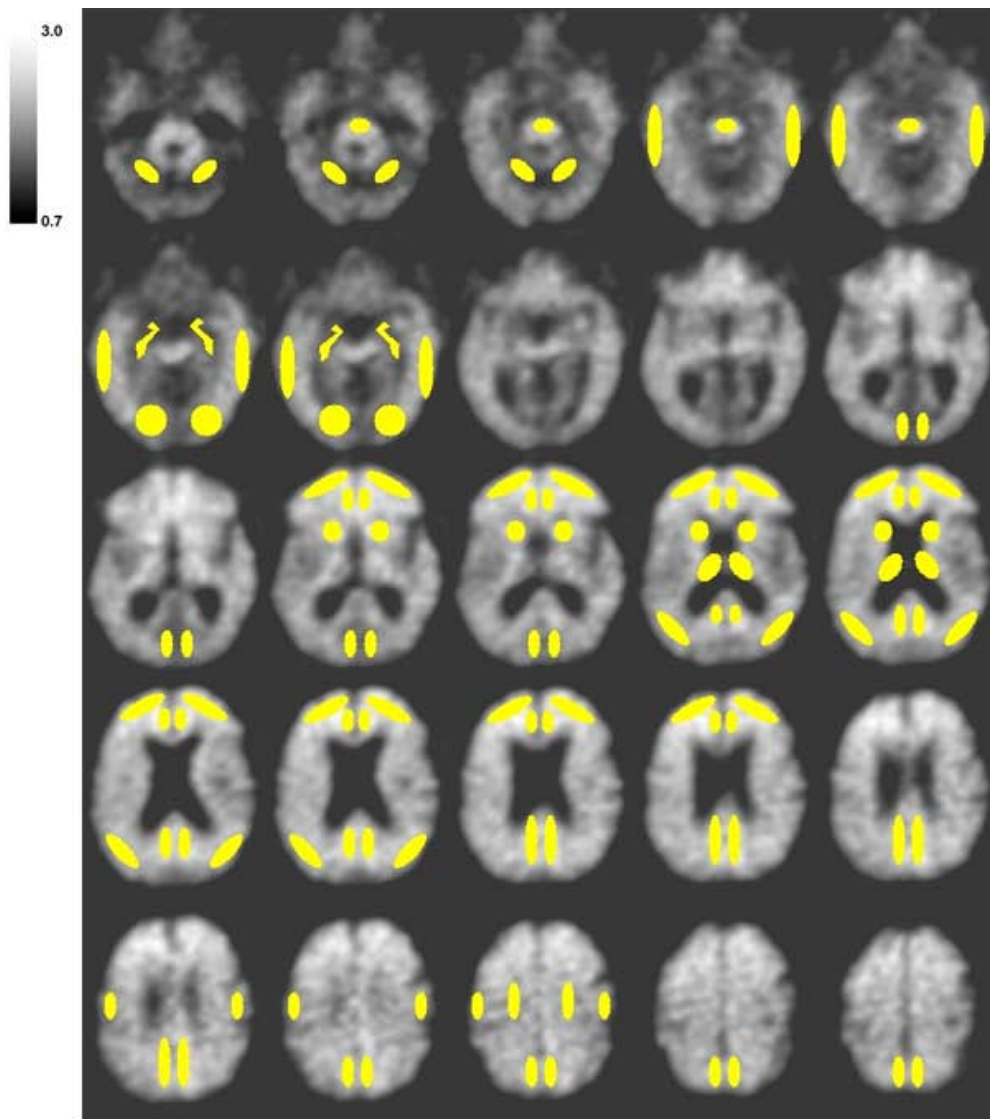
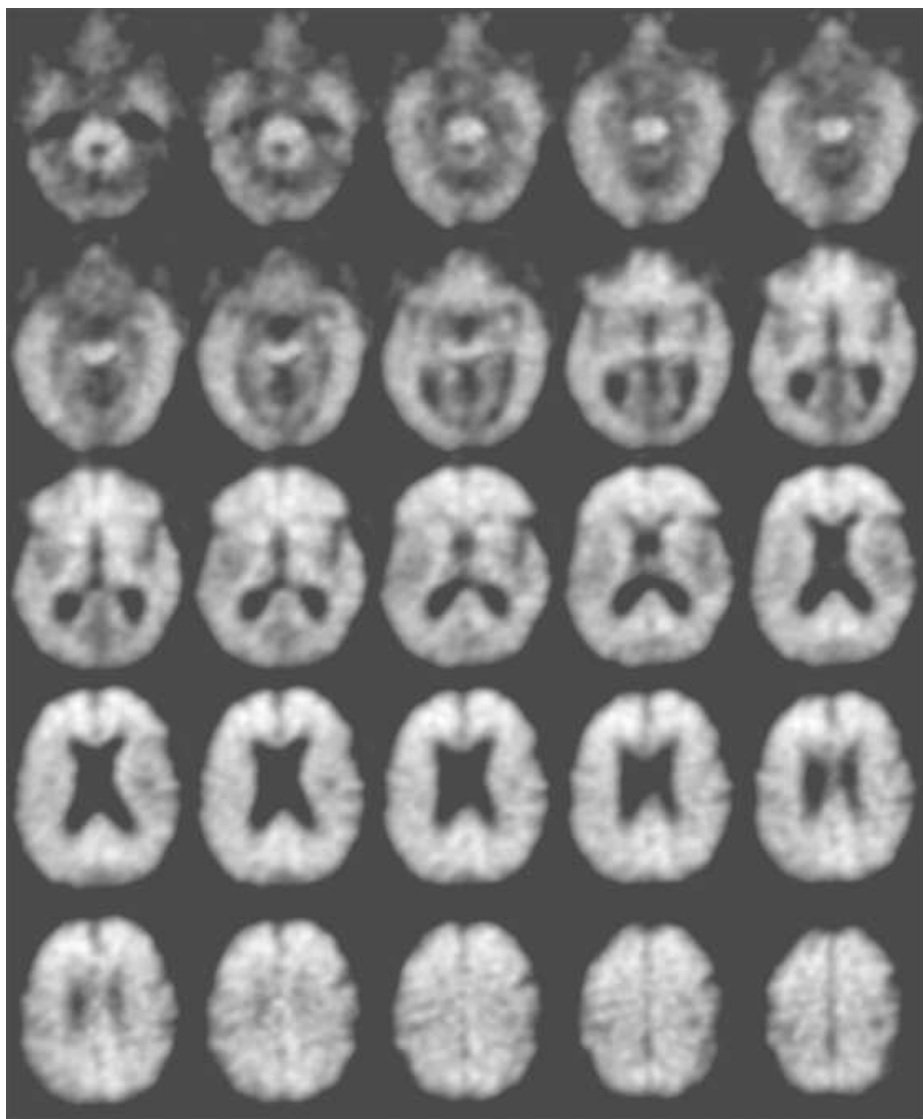
007_S_1339 AD

Subject ID	Group	ACG	FRC	LTC	PAR	PRC	MTC	OCC	OCP	PON	AVS	CER	SMC	SWM	THL
007_1339	AD	2.36	2.42	2.24	2.50	2.83	1.23	1.78	1.71	1.94	2.41	1.00	1.77	1.71	1.69



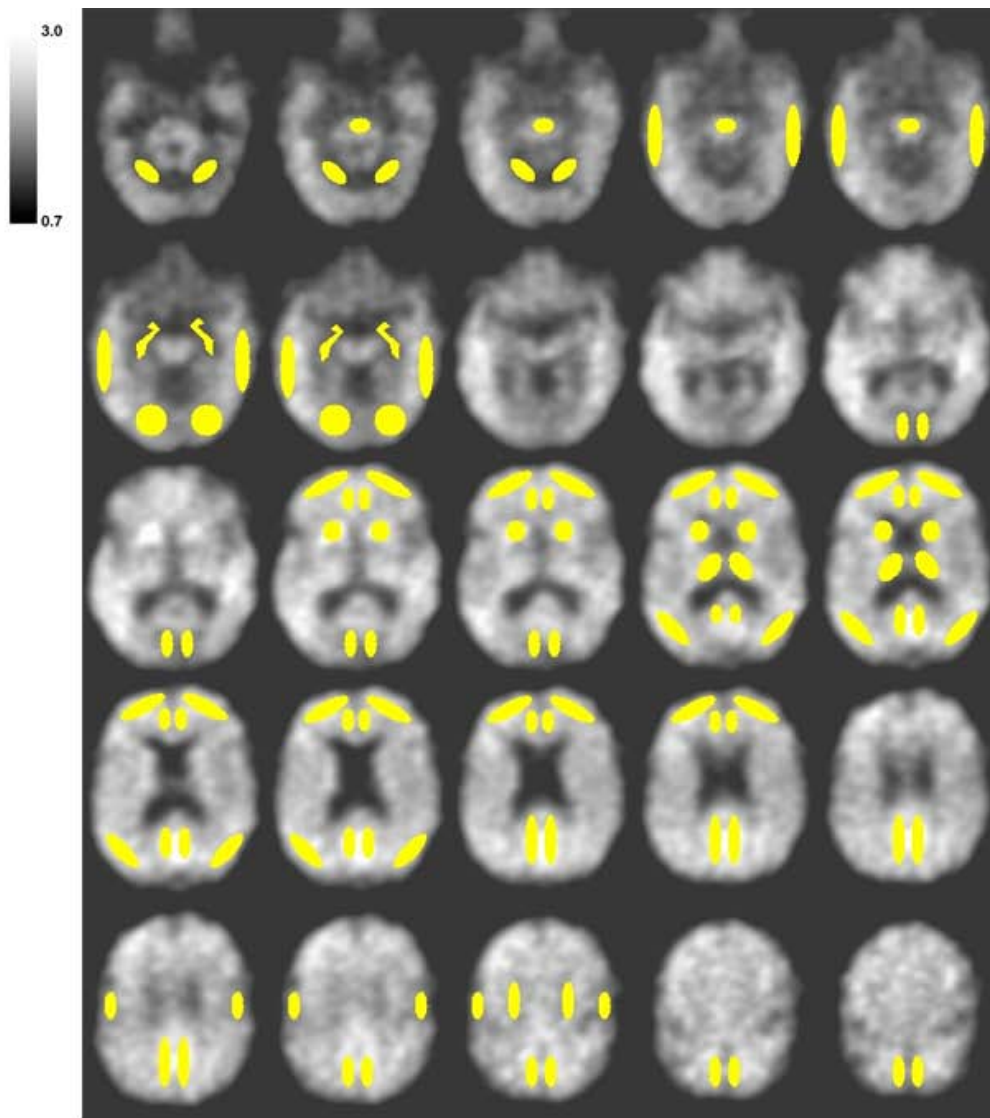
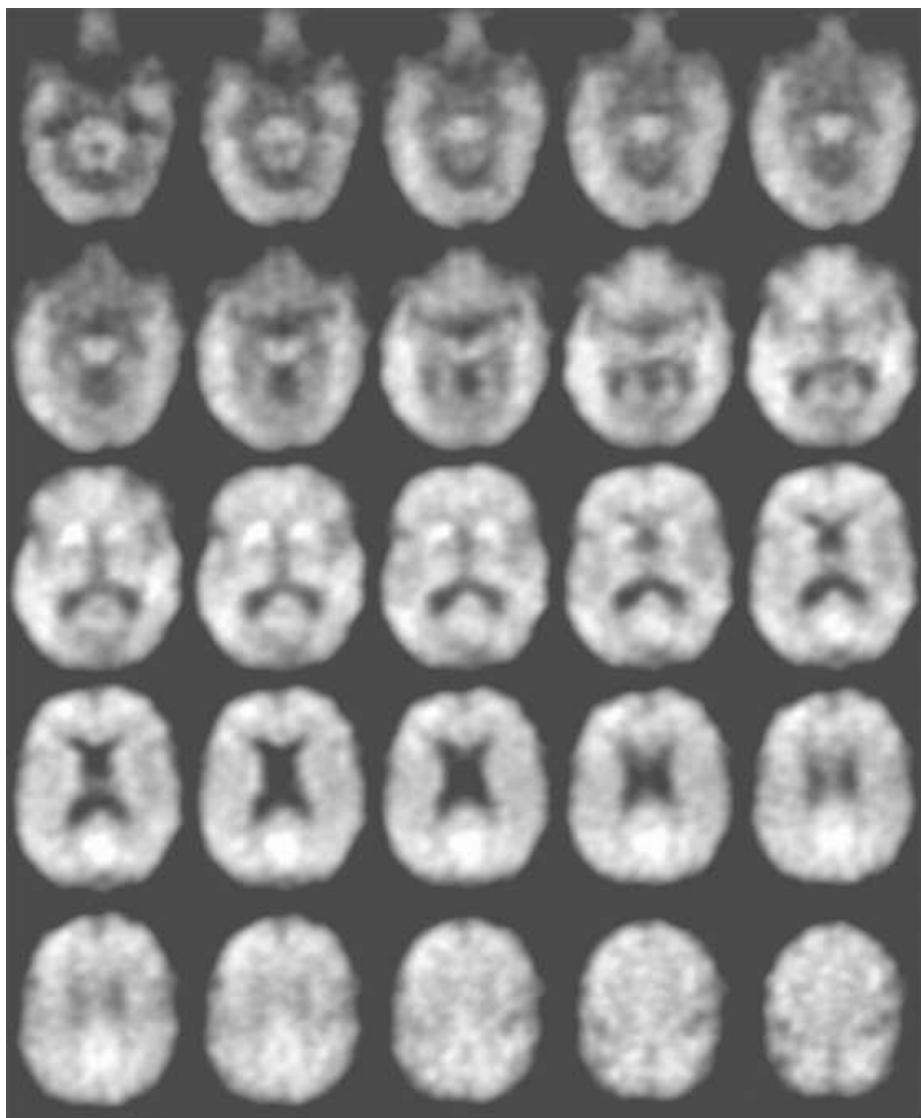
018_S_0682 AD

Subject ID	Group	ACG	FRC	LTC	PAR	PRC	MTC	OCC	OCP	PON	AVS	CER	SMC	SWM	THL
018_0682	AD	2.07	2.11	1.95	1.89	2.11	1.17	1.54	1.60	1.67	2.15	1.00	1.64	1.77	1.66



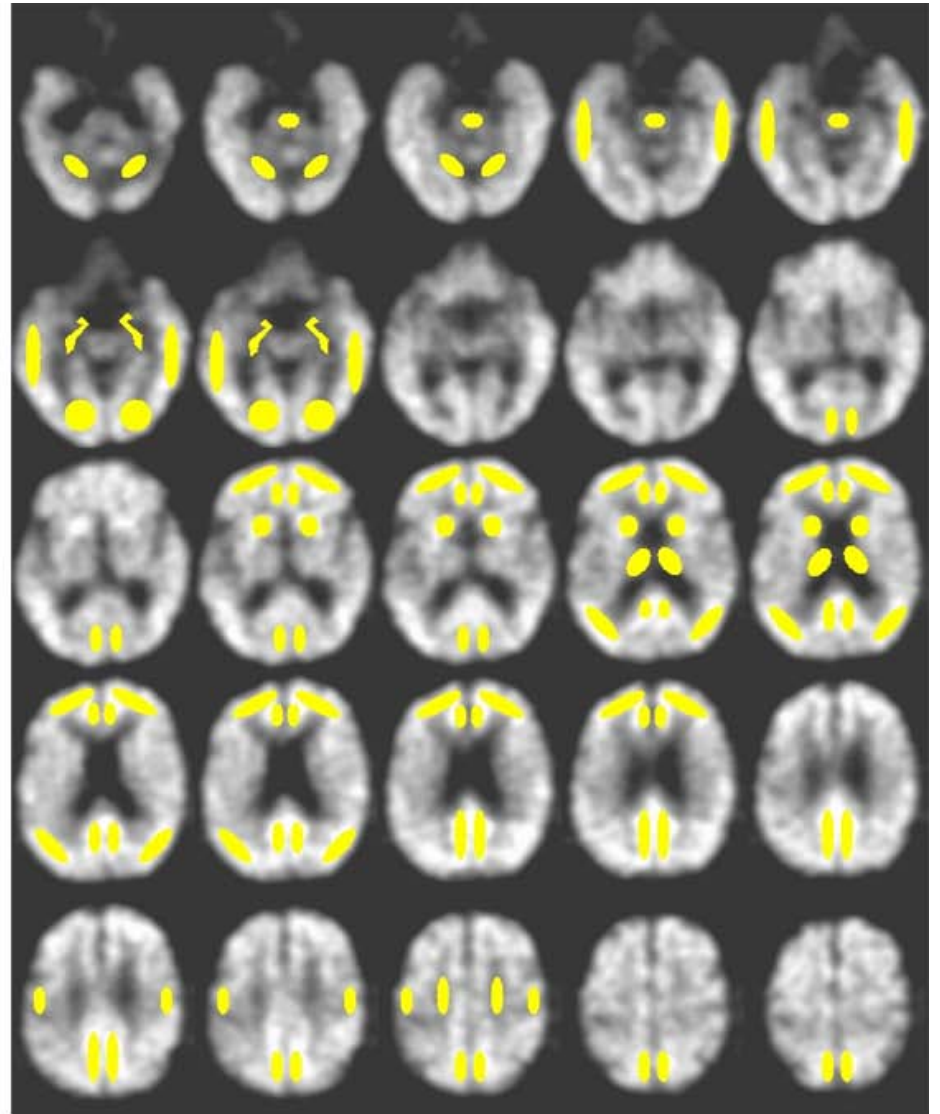
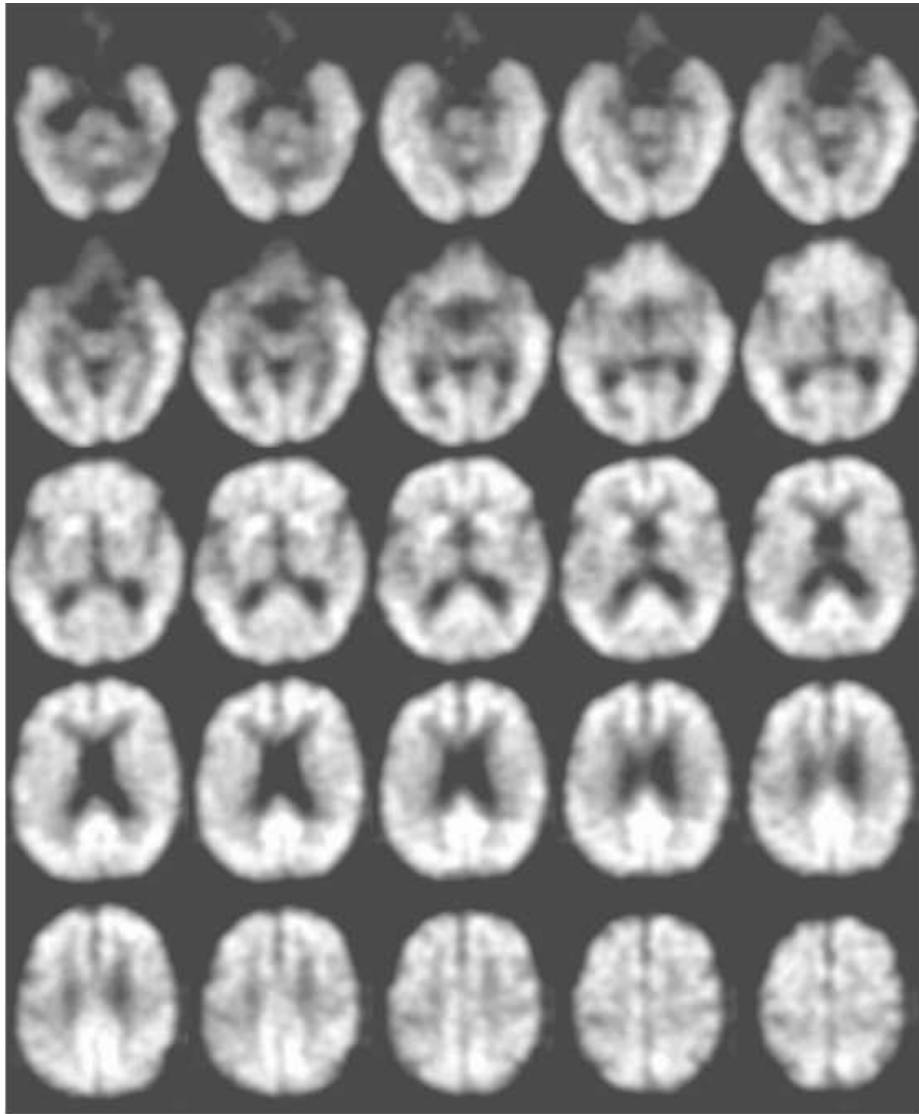
024_S_1171 AD

Subject ID	Group	ACG	FRC	LTC	PAR	PRC	MTC	OCC	OCP	PON	AVS	CER	SMC	SWM	THL
024_1171	AD	2.44	2.44	1.78	1.95	2.29	1.18	1.45	1.53	2.03	2.16	1.00	1.67	1.93	1.33



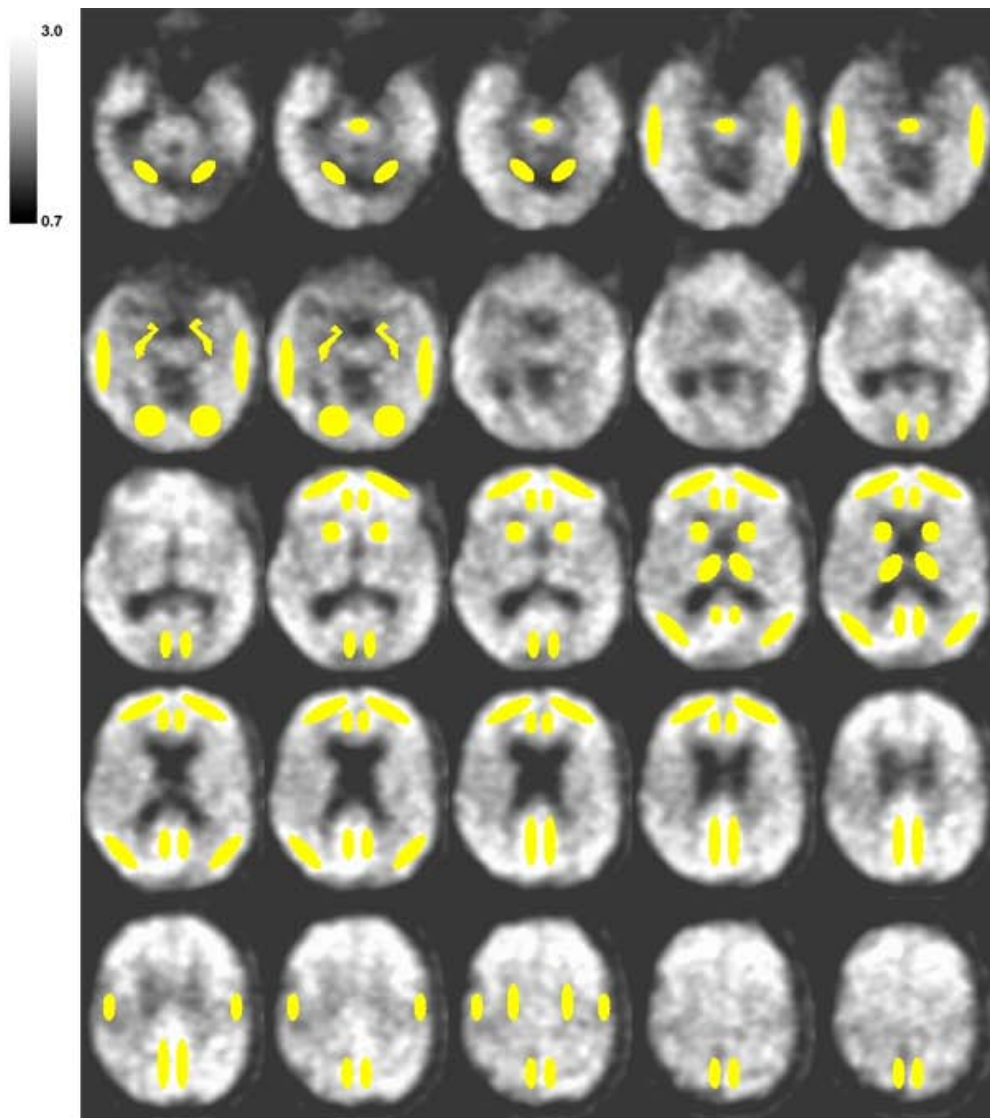
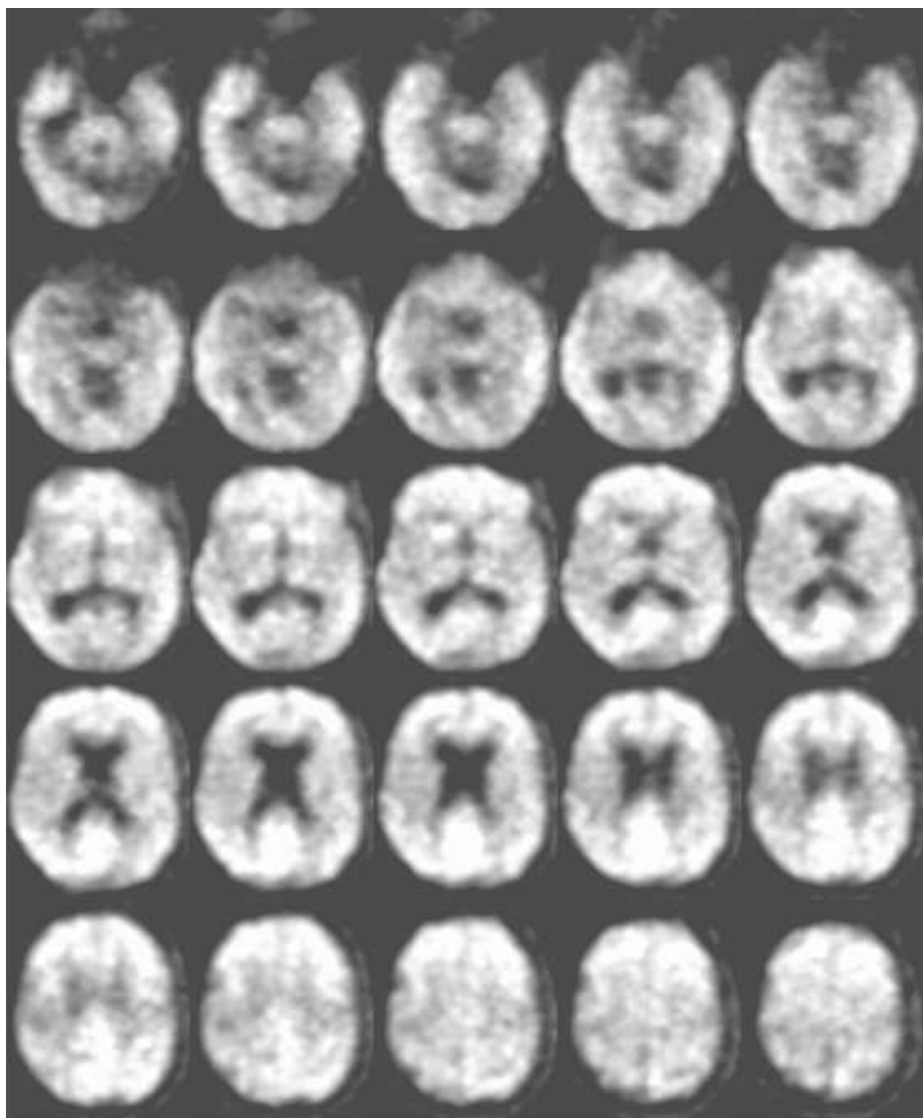
024_S_1307 AD

Subject ID	Group	ACG	FRC	LTC	PAR	PRC	MTC	OCC	OCP	PON	AVS	CER	SMC	SWM	THL
024_1307	AD	2.08	2.06	1.68	2.04	2.23	1.05	1.46	1.56	1.75	2.23	1.00	1.40	1.72	1.73



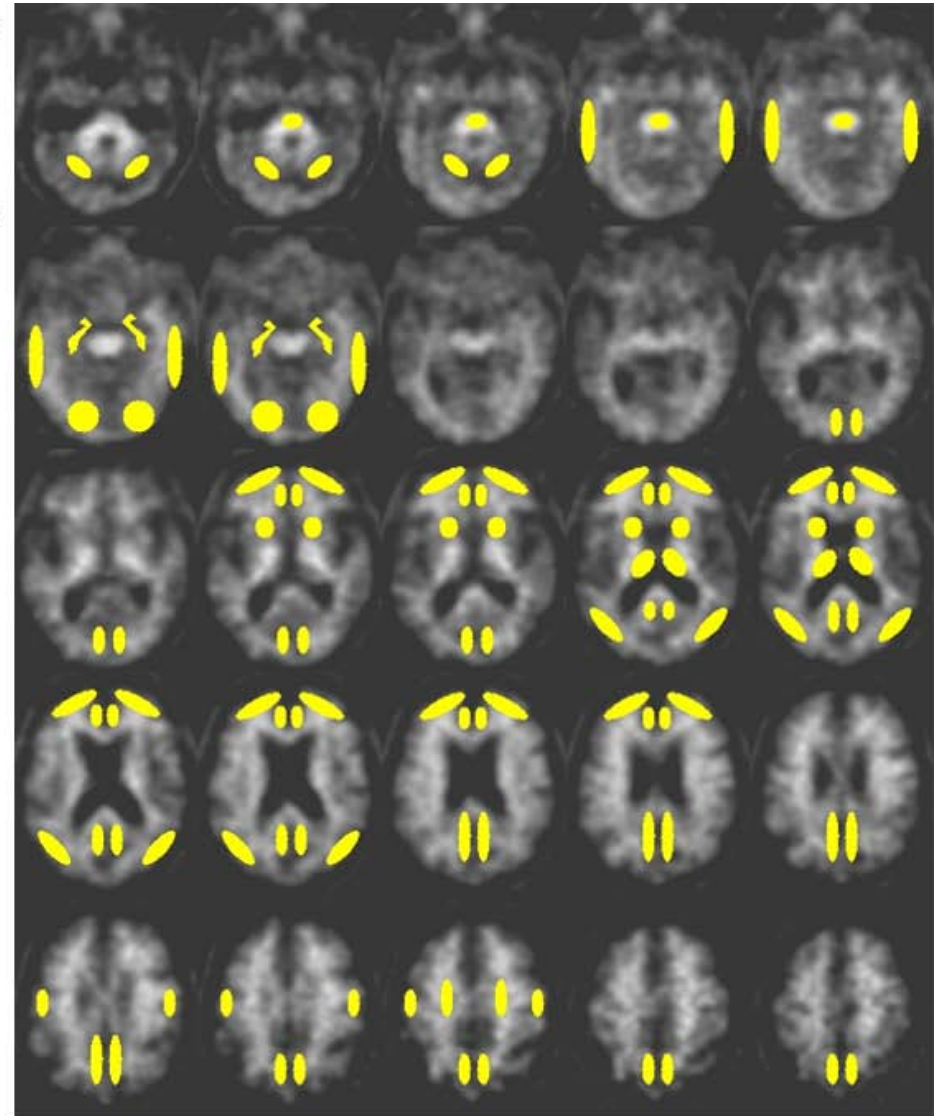
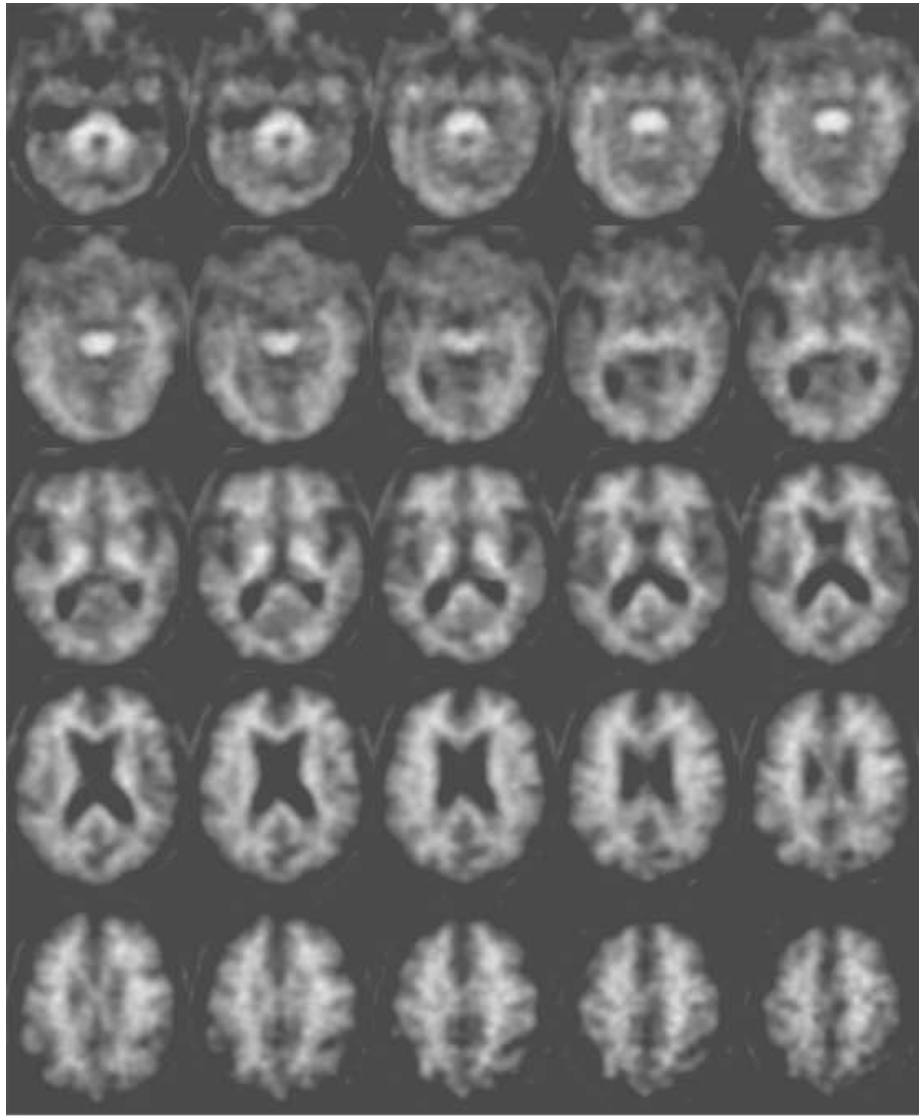
032_0400 AD

Subject ID	Group	ACG	FRC	LTC	PAR	PRC	MTC	OCC	OCP	PON	AVS	CER	SMC	SWM	THL
032_0400	AD	1.77	1.87	1.73	1.94	2.04	0.86	1.66	1.46	1.09	1.83	1.00	1.47	1.24	1.06



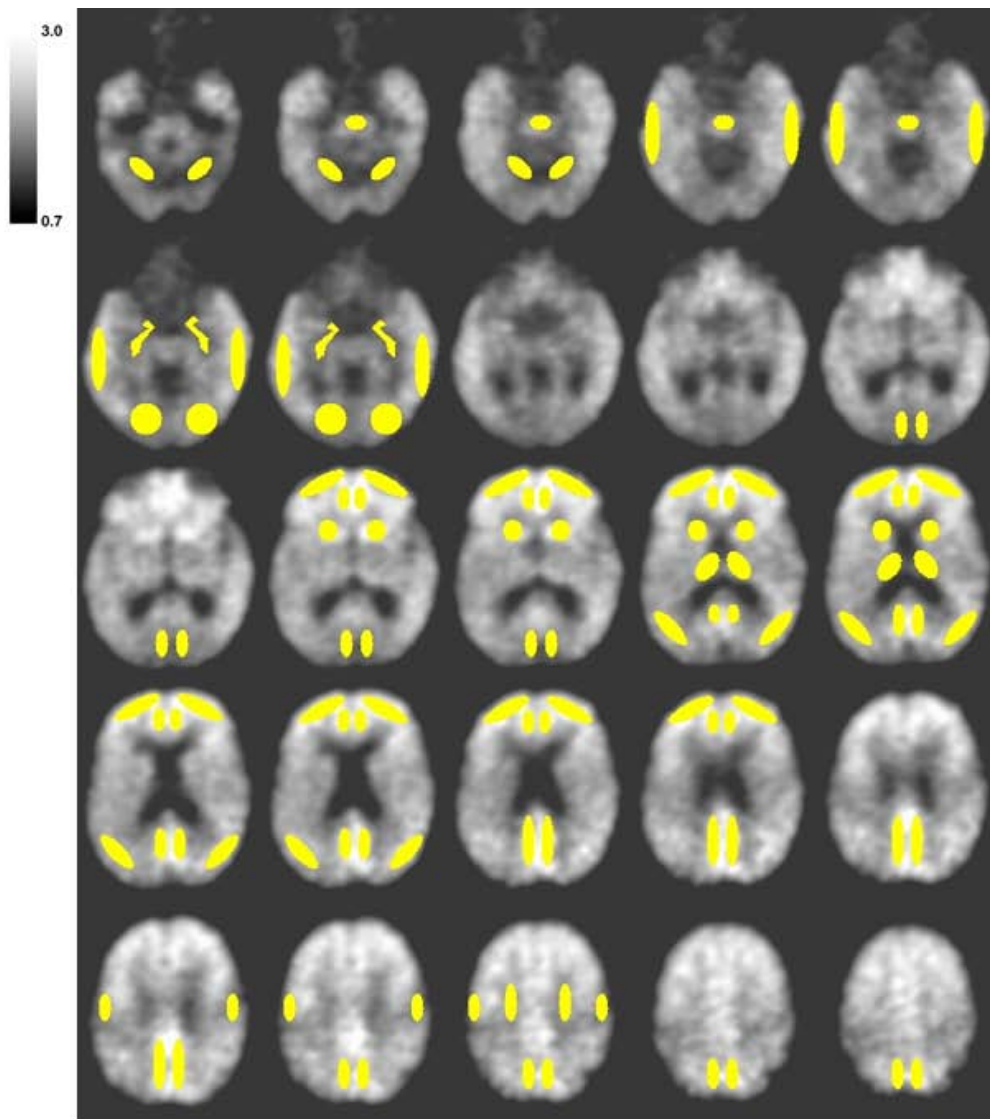
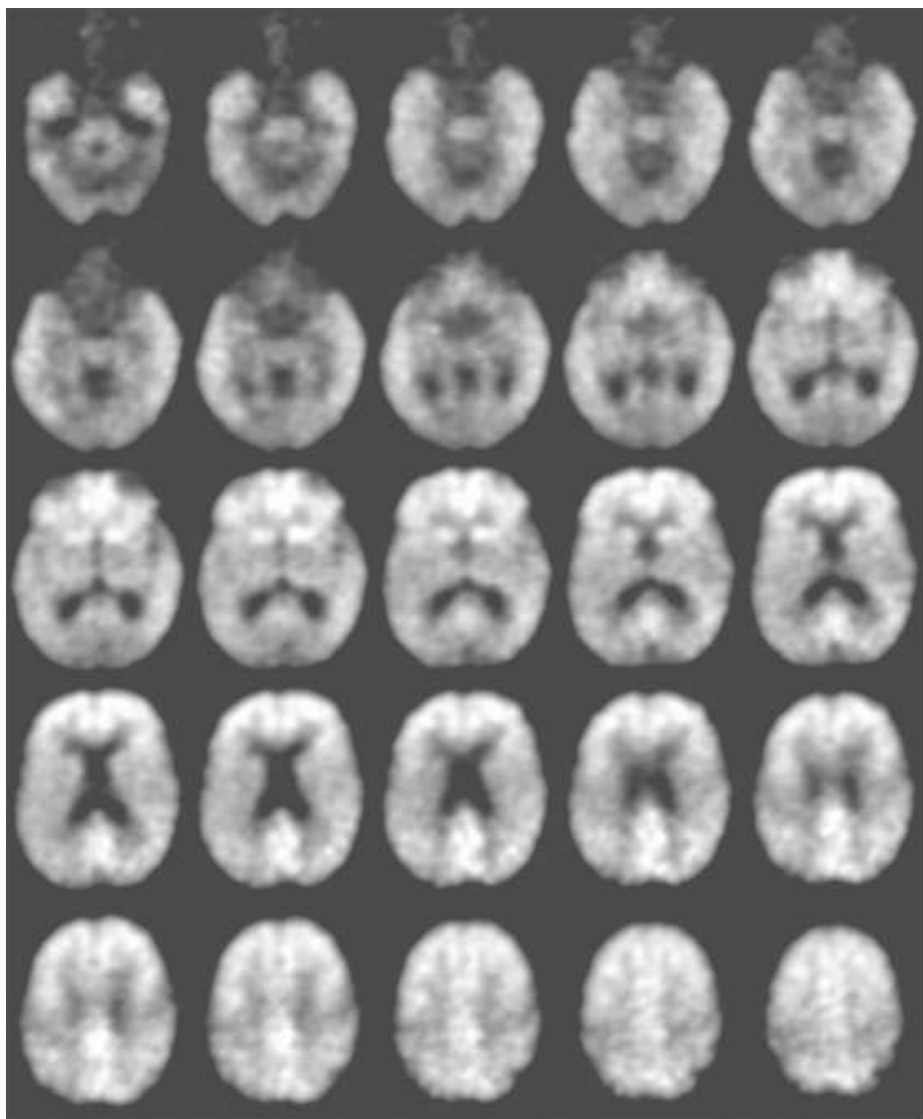
037_S_0627 AD

Subject ID	Group	ACG	FRC	LTC	PAR	PRC	MTC	OCC	OCP	PON	AVS	CER	SMC	SWM	THL
037_0627	AD	2.25	2.39	2.11	2.28	2.35	1.29	1.80	1.64	1.81	2.04	1.00	1.60	1.70	1.71



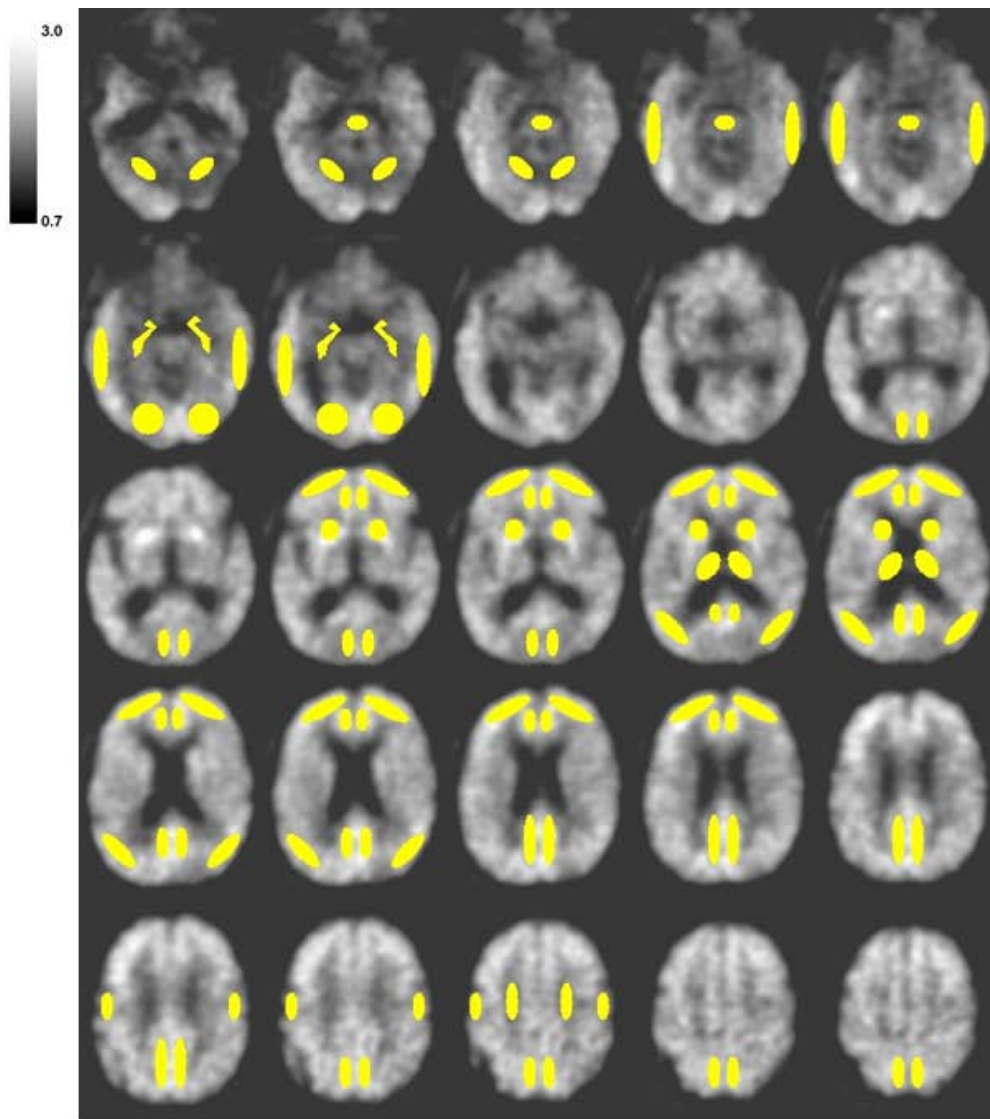
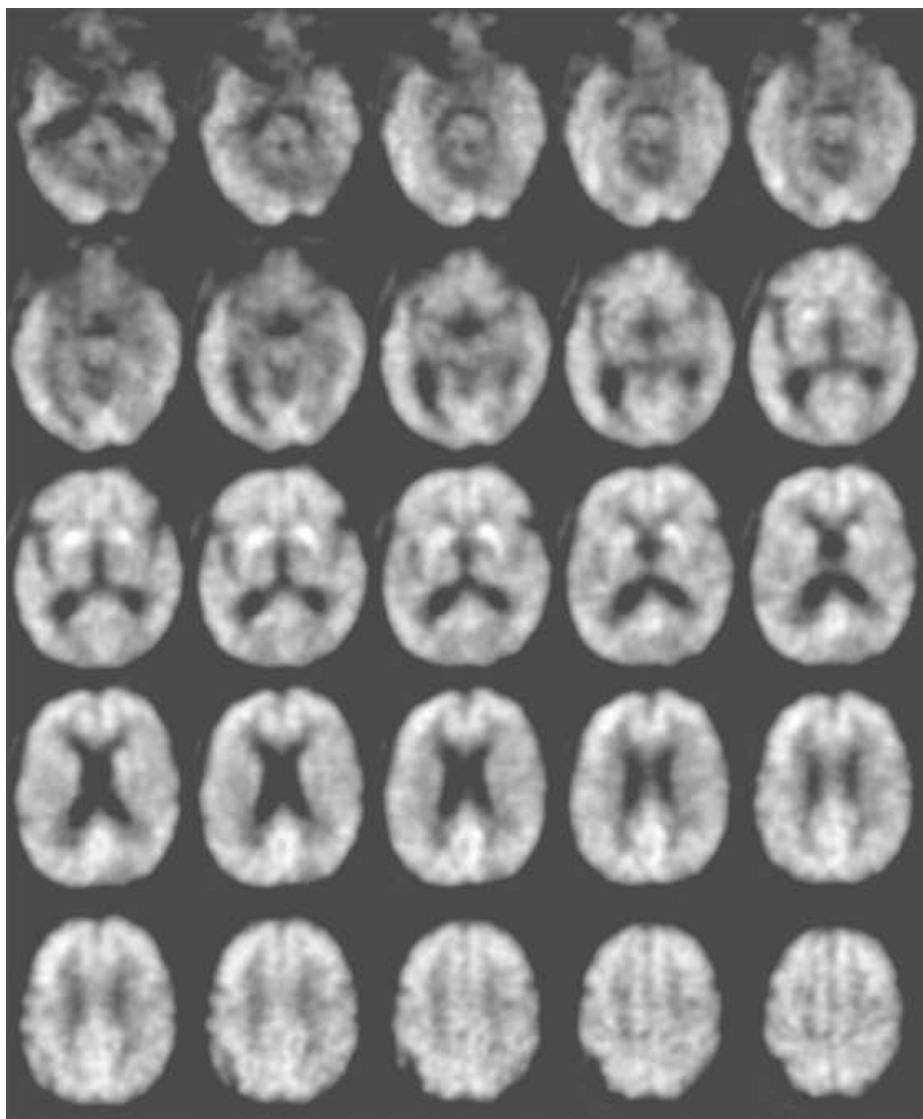
041_1391 AD

Subject ID	Group	ACG	FRC	LTC	PAR	PRC	MTC	OCC	OCP	PON	AVS	CER	SMC	SWM	THL
041_1391	AD	1.09	1.28	1.18	1.13	1.14	1.09	1.26	1.37	2.16	1.30	1.00	1.21	1.72	1.28



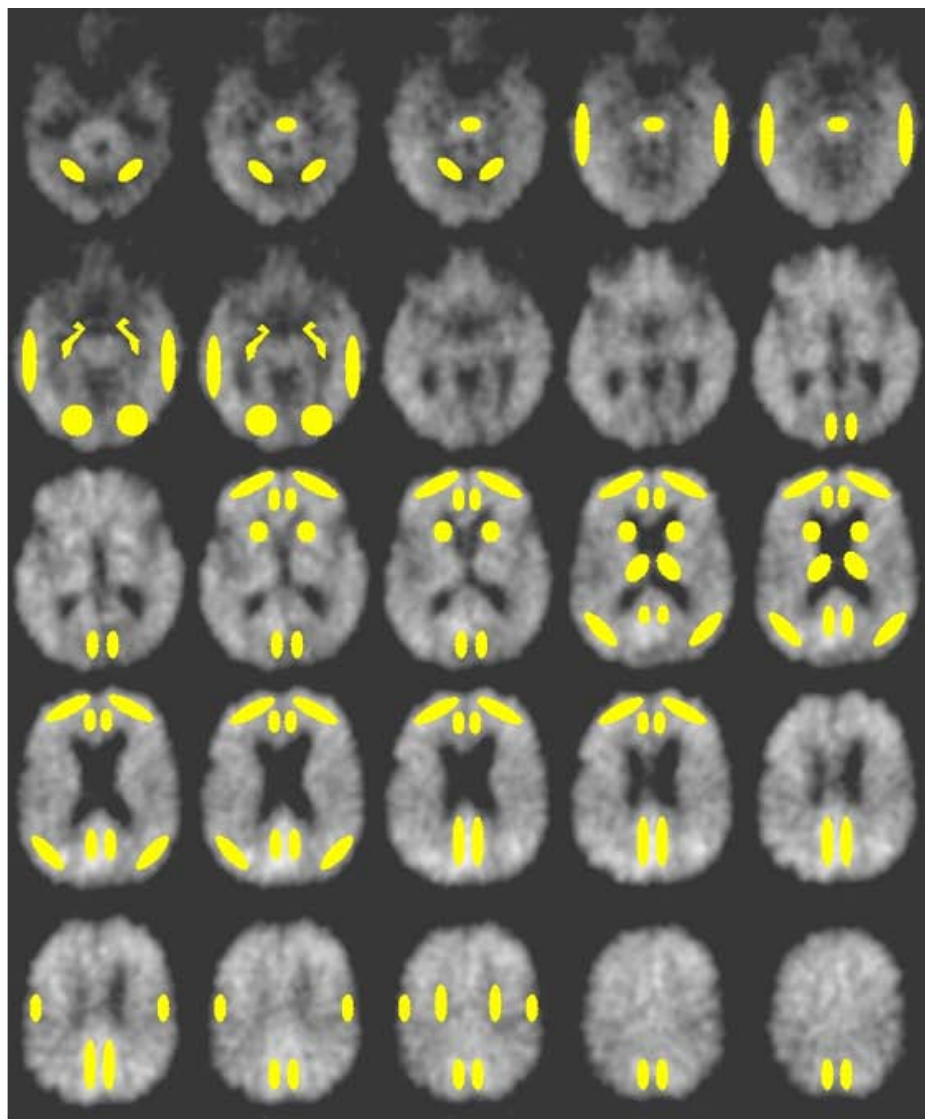
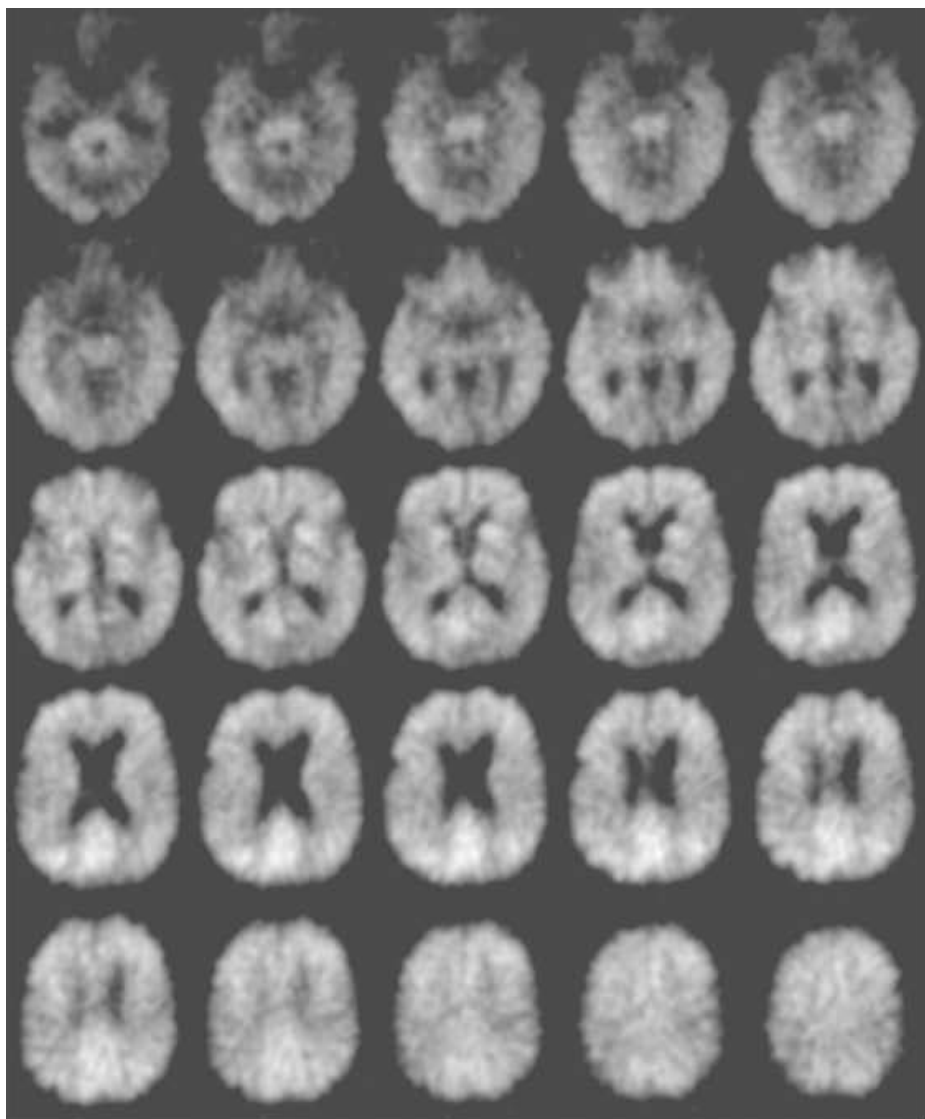
094_1397 AD

Subject ID	Group	ACG	FRC	LTC	PAR	PRC	MTC	OCC	OCP	PON	AVS	CER	SMC	SWM	THL
094_1397	AD	2.49	2.24	1.91	1.88	2.18	1.17	1.32	1.36	1.53	2.05	1.00	1.44	1.63	1.48



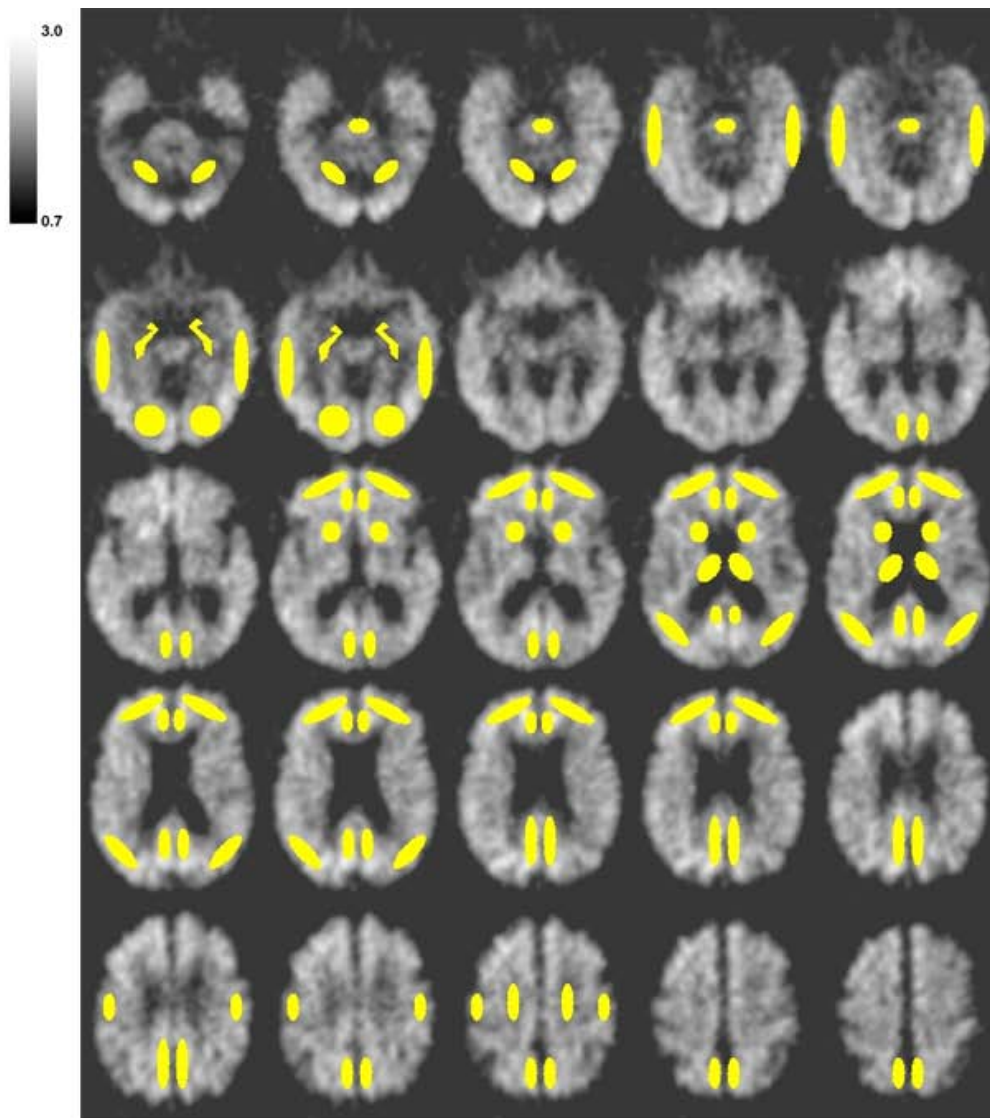
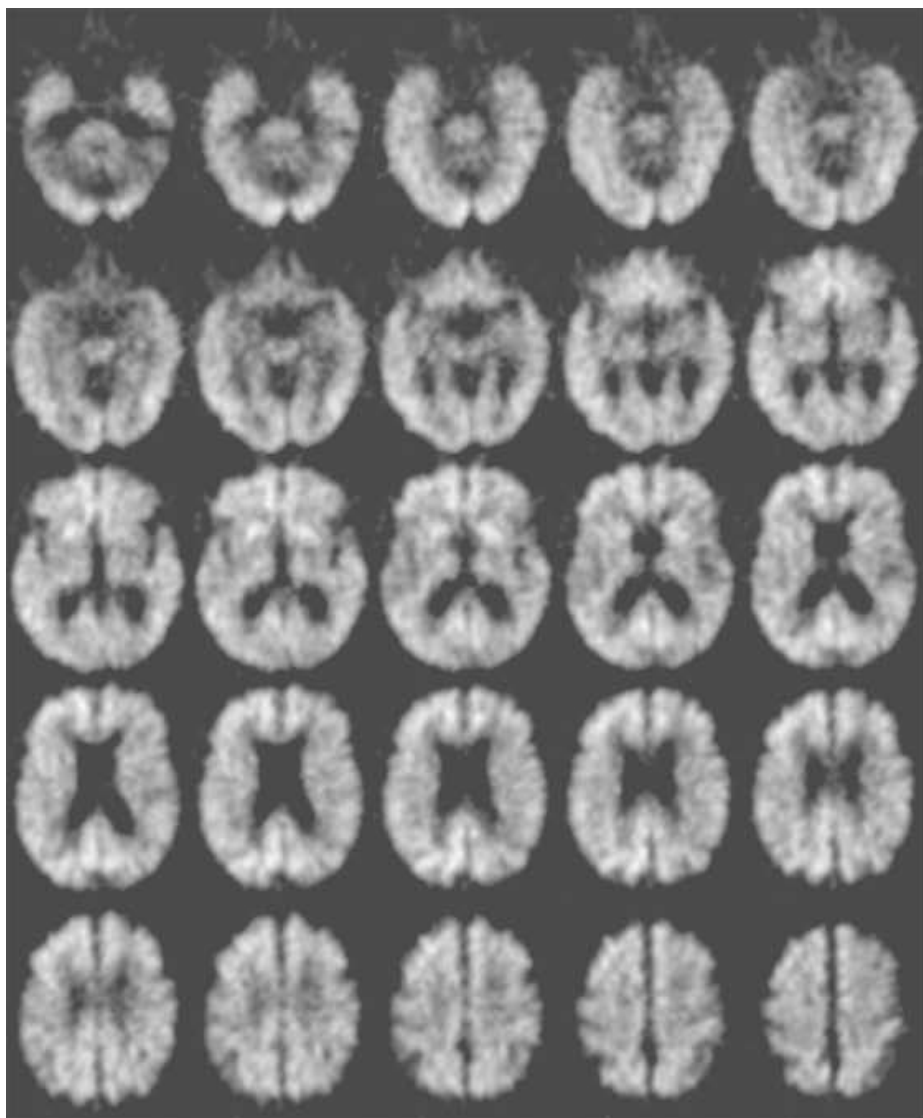
094_1402 AD

Subject ID	Group	ACG	FRC	LTC	PAR	PRC	MTC	OCC	OCP	PON	AVS	CER	SMC	SWM	THL
094_1402	AD	1.96	1.91	1.65	1.74	1.96	0.99	1.59	1.34	1.26	1.97	1.00	1.45	1.21	1.28



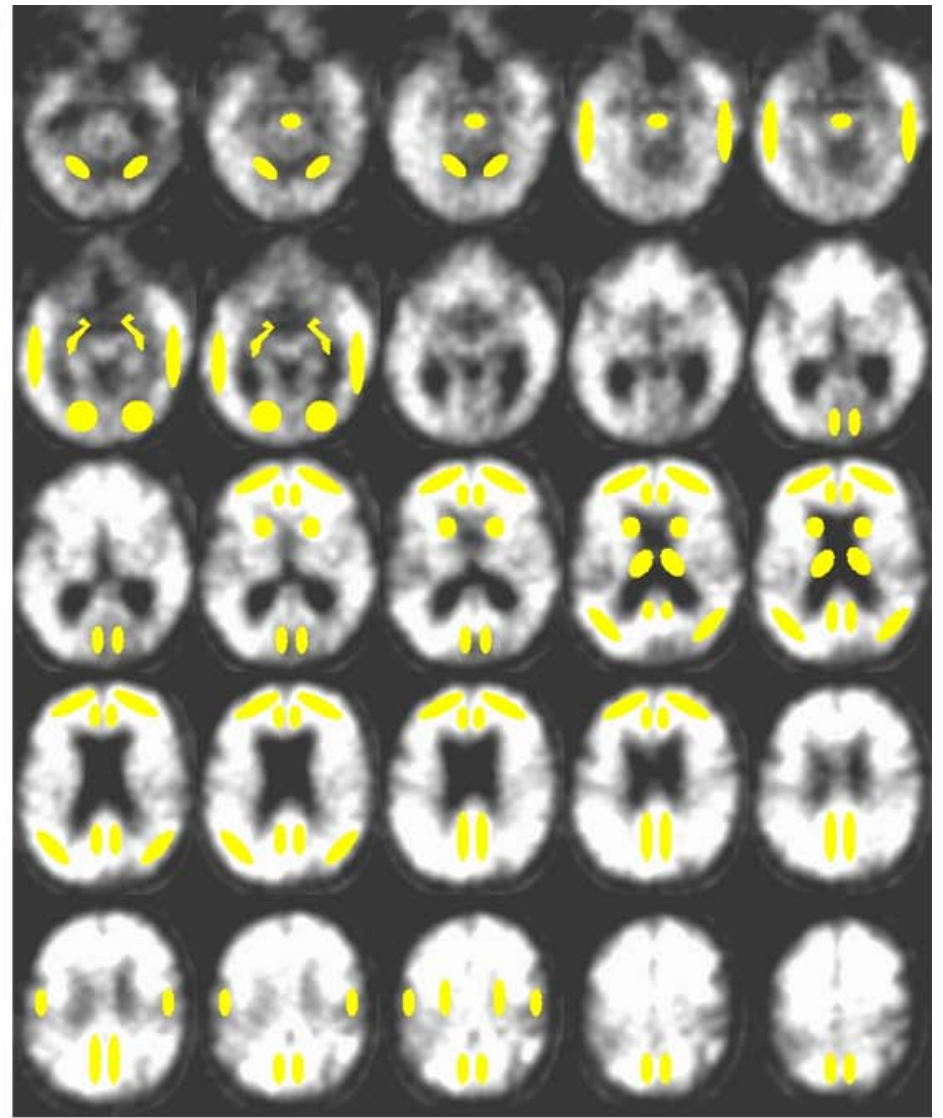
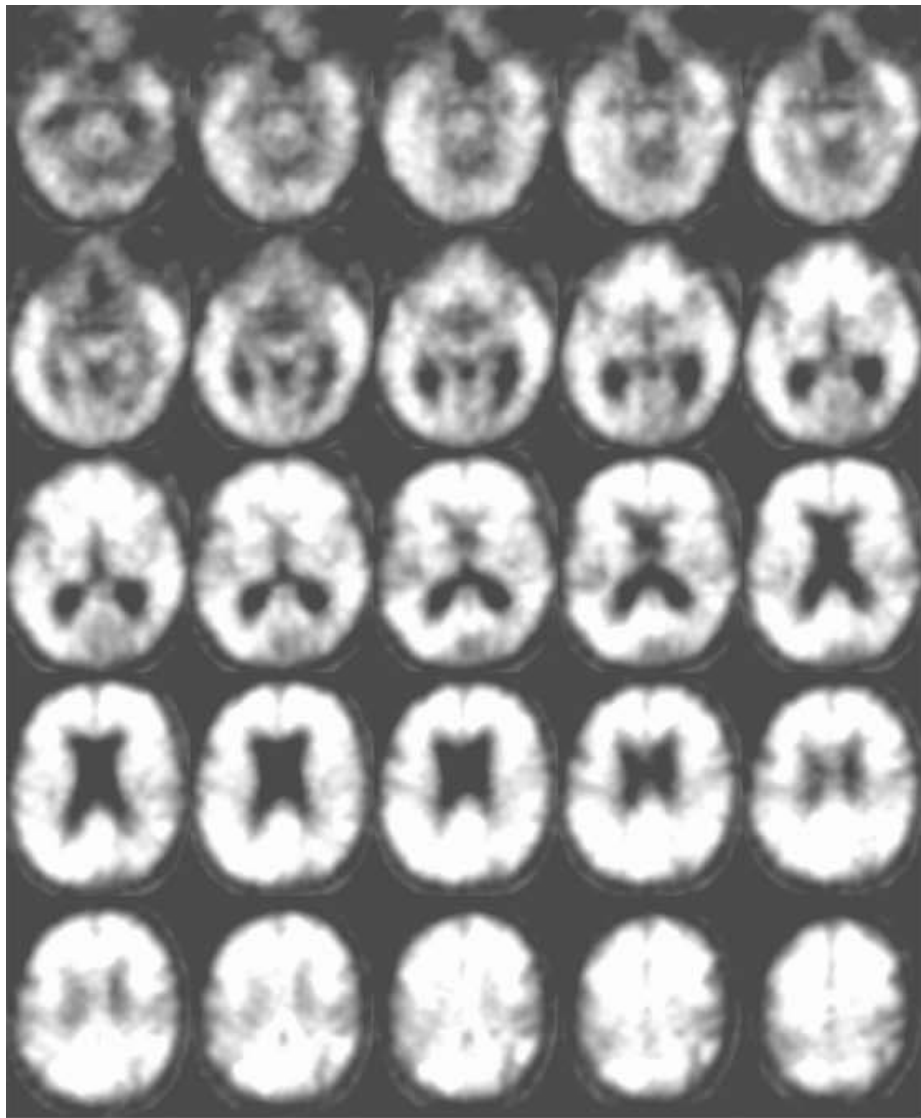
127_0754 AD

Subject ID	Group	ACG	FRC	LTC	PAR	PRC	MTC	OCC	OCP	PON	AVS	CER	SMC	SWM	THL
127_0754	AD	1.75	1.87	1.52	1.84	2.09	1.04	1.41	1.41	1.57	1.71	1.00	1.36	1.61	1.44



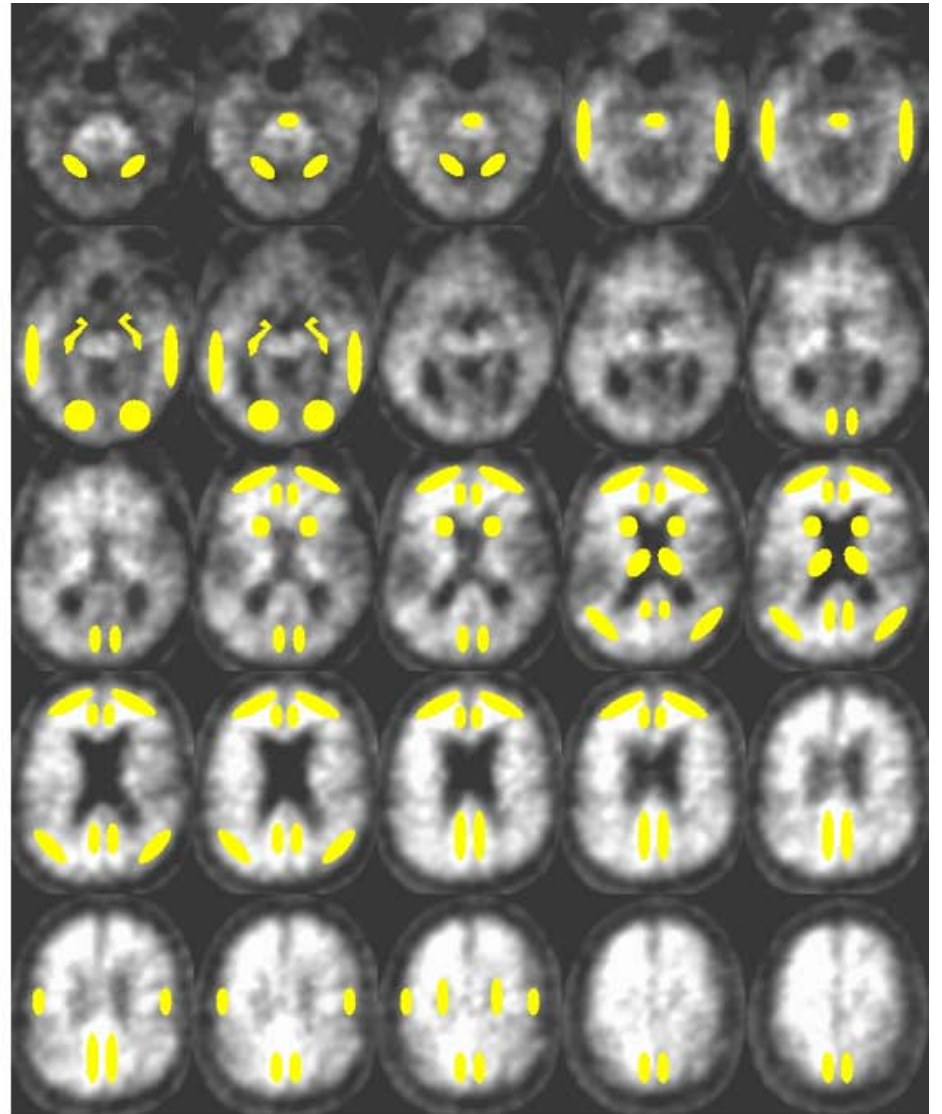
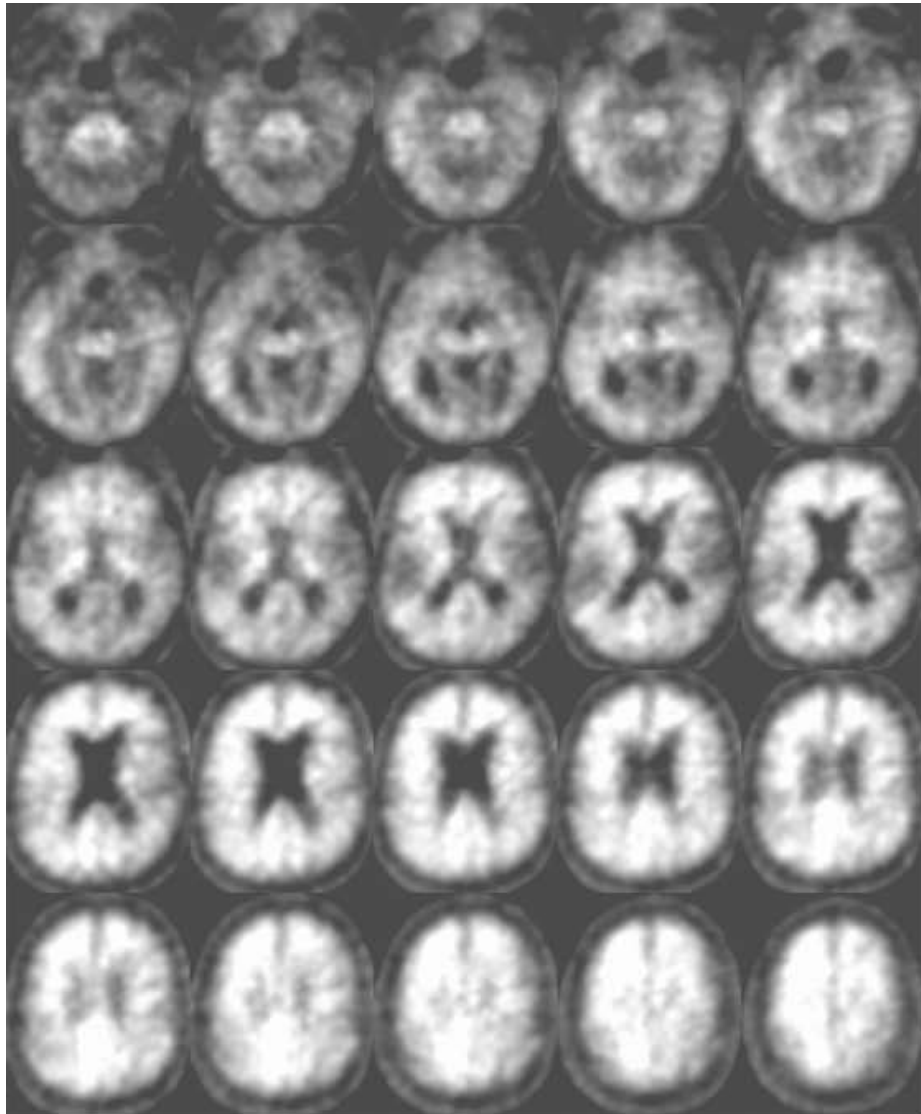
127_S_1382 AD

Subject ID	Group	ACG	FRC	LTC	PAR	PRC	MTC	OCC	OCP	PON	AVS	CER	SMC	SWM	THL
127_1382	AD	1.79	1.77	1.61	1.64	1.72	0.96	1.64	1.45	1.67	1.78	1.00	1.42	1.89	1.32



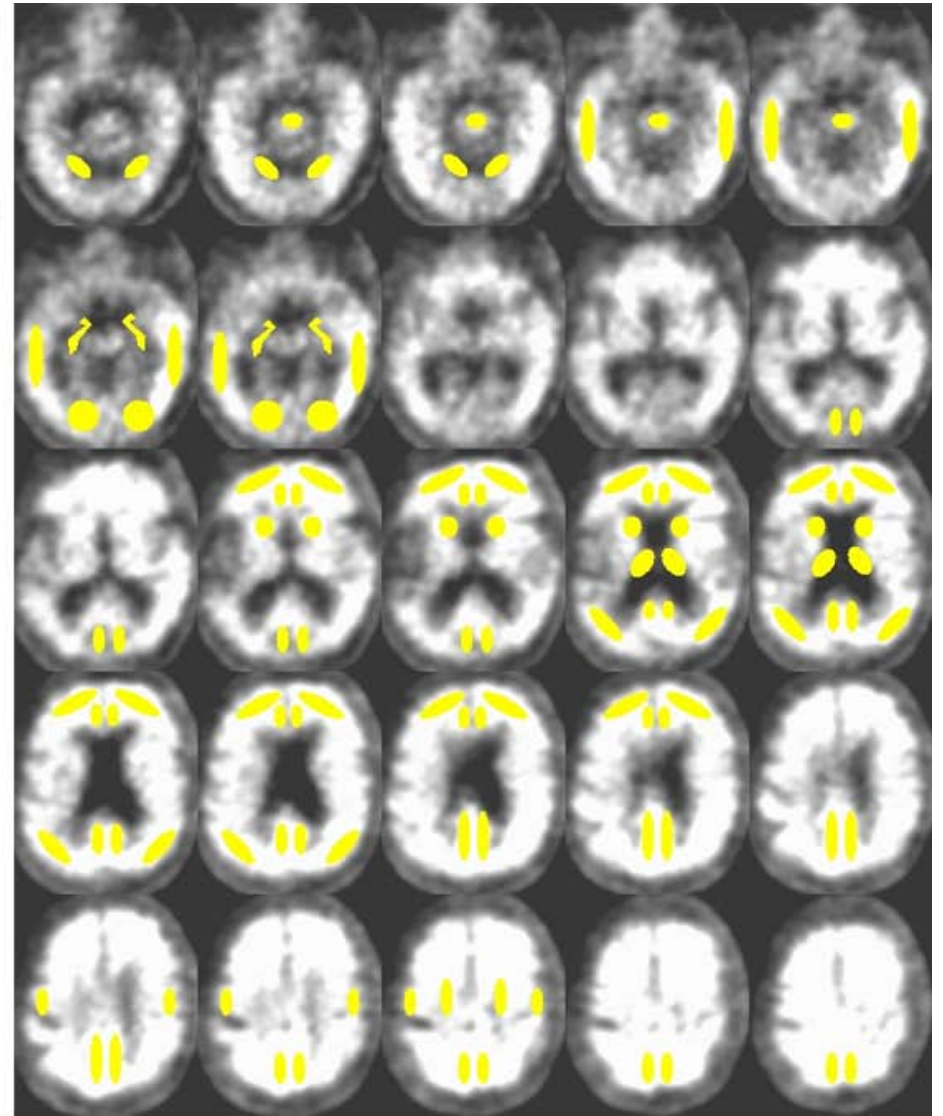
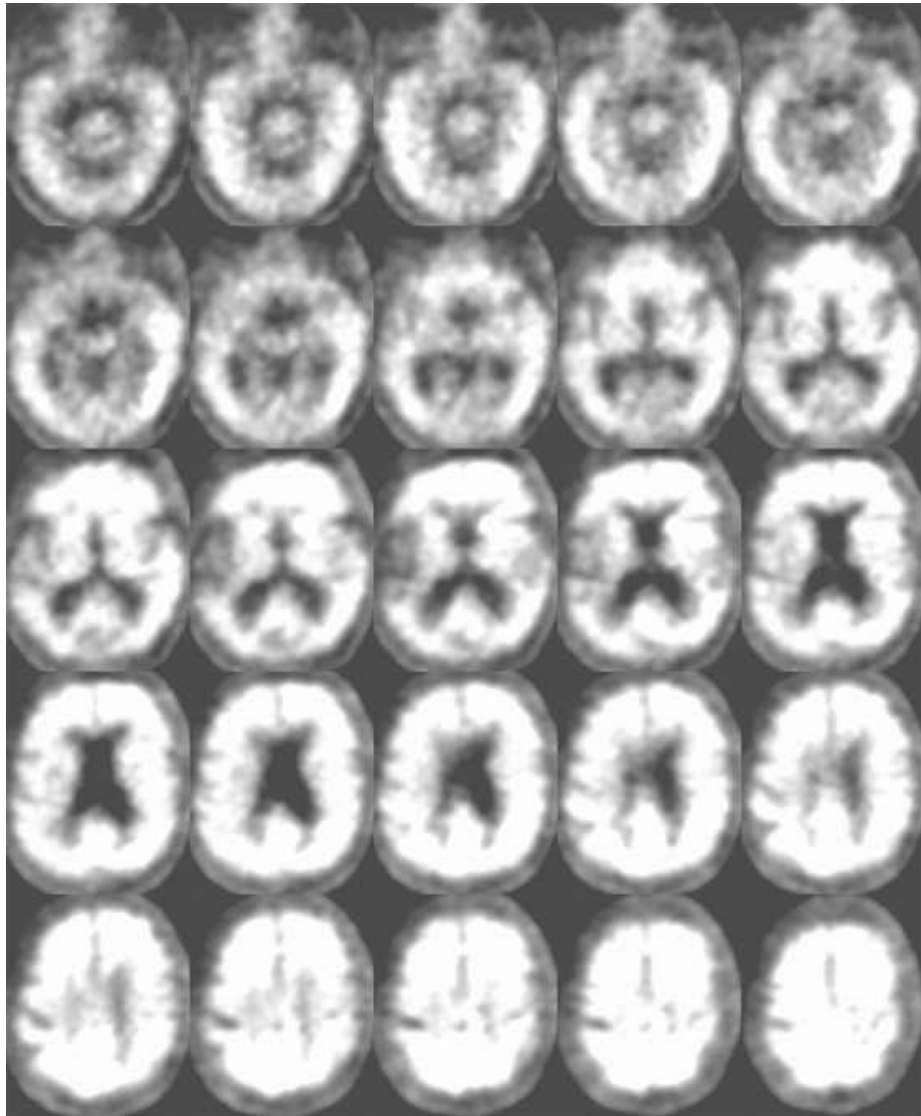
128_0167 AD

Subject ID	Group	ACG	FRC	LTC	PAR	PRC	MTC	OCC	OCP	PON	AVS	CER	SMC	SWM	THL
128_0167	AD	2.29	2.37	1.82	2.09	2.43	0.93	1.28	1.41	1.43	1.81	1.00	1.40	1.84	0.99



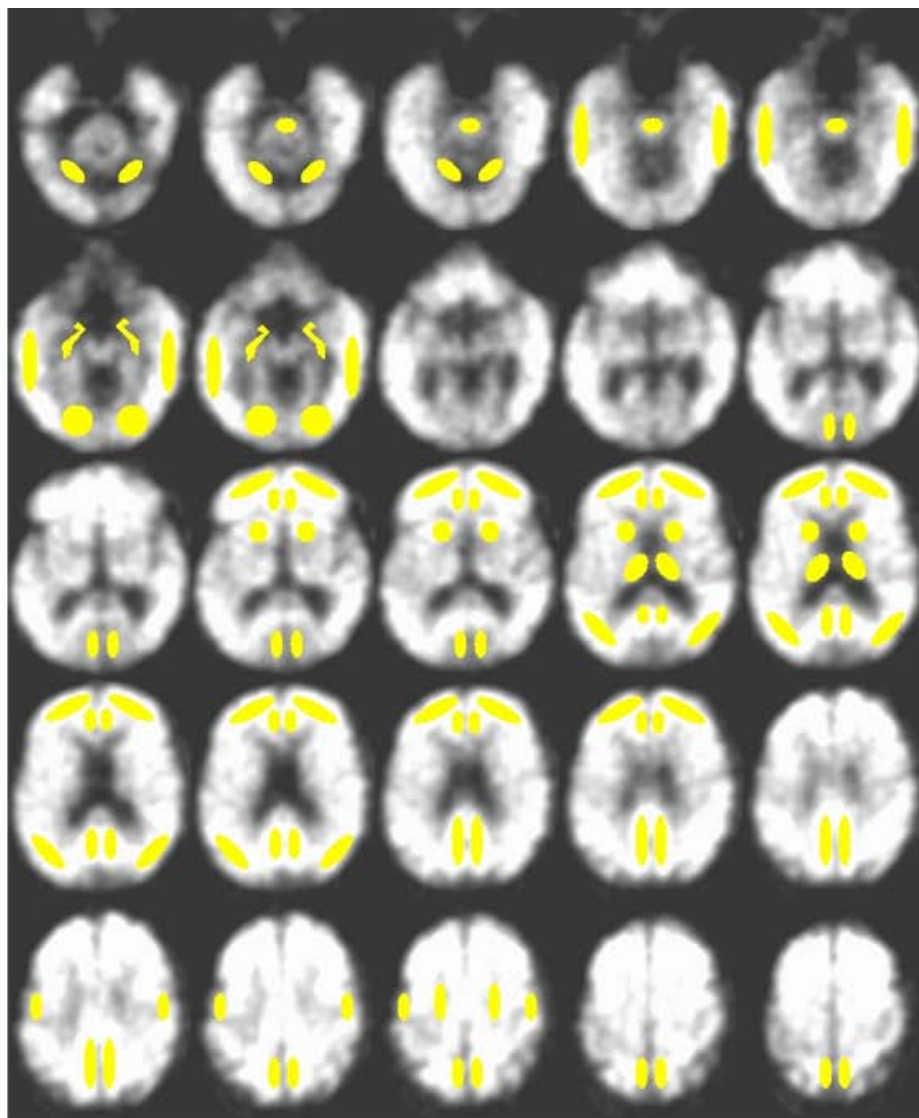
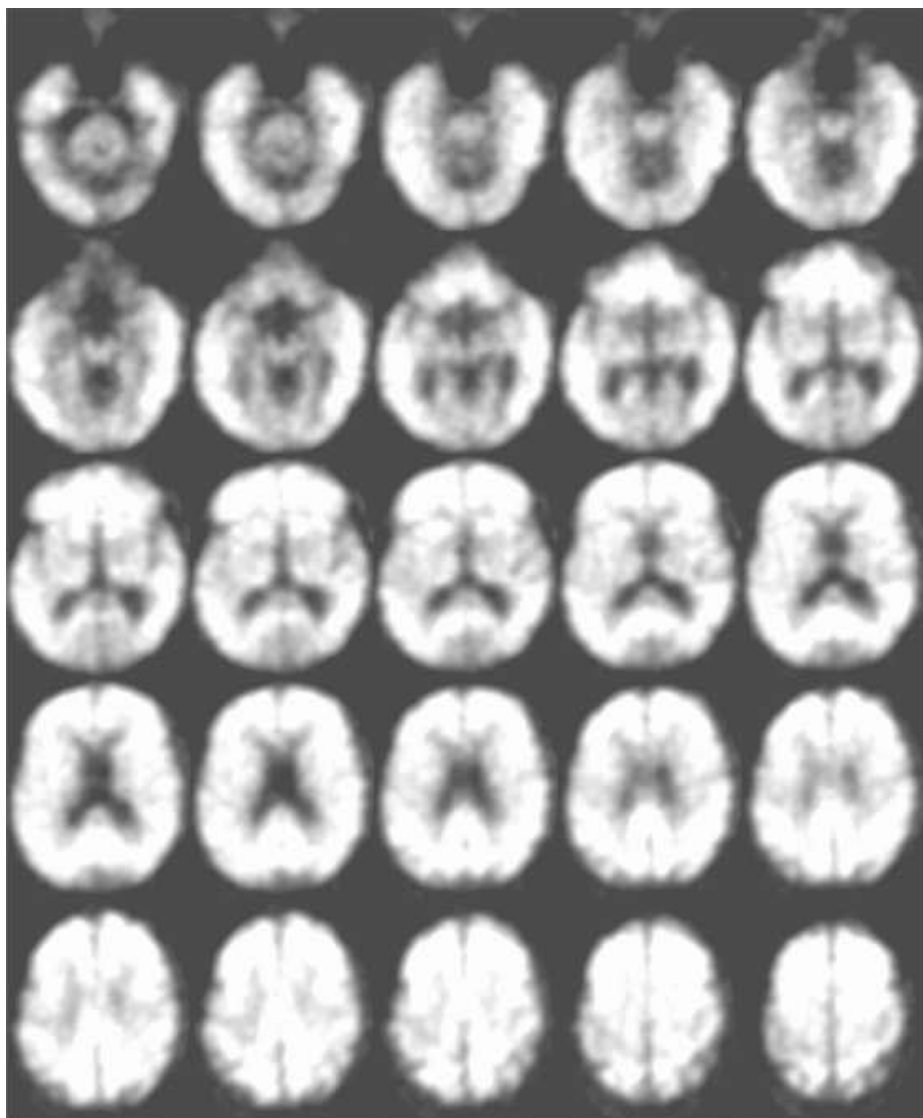
128_0216 AD

Subject ID	Group	ACG	FRC	LTC	PAR	PRC	MTC	OCC	OCP	PON	AVS	CER	SMC	SWM	THL
128_0216	AD	2.42	2.20	1.81	2.07	2.56	1.18	1.79	1.48	1.89	1.79	1.00	1.74	2.19	1.47



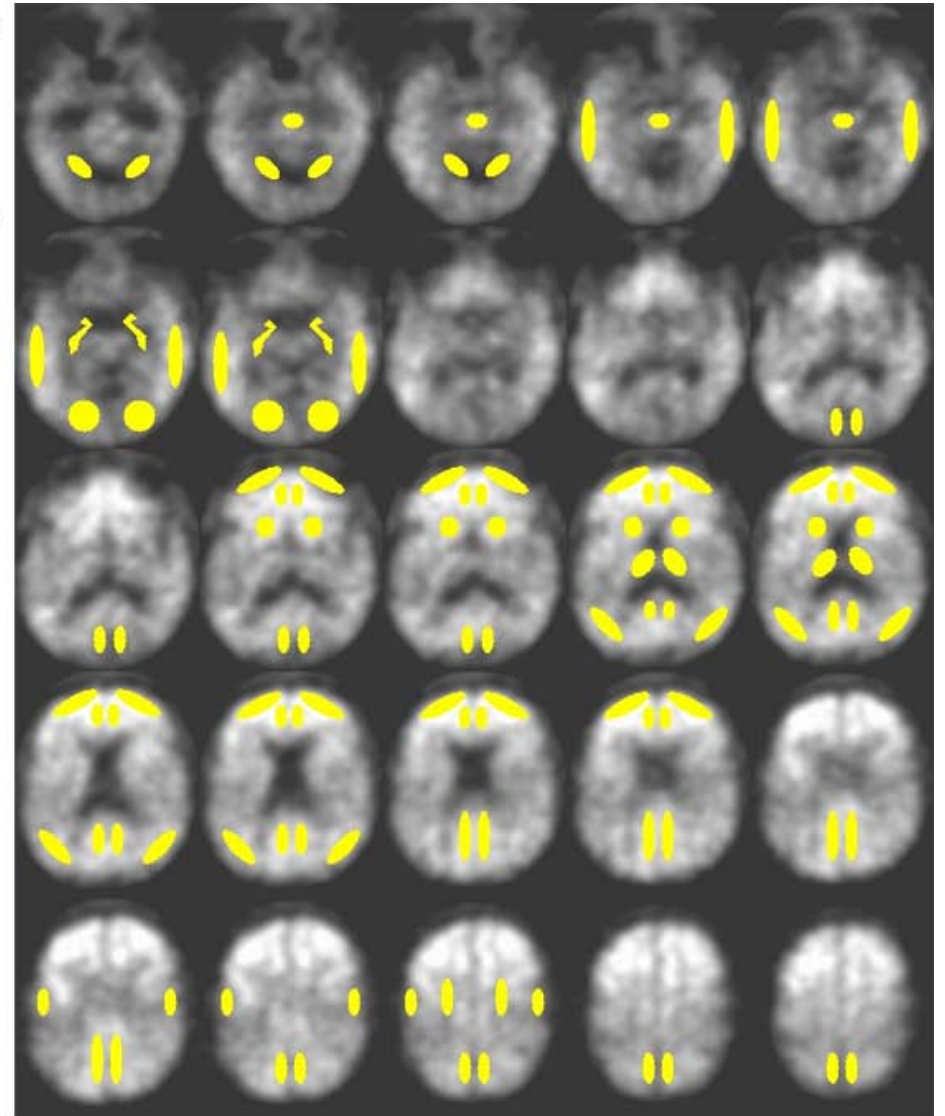
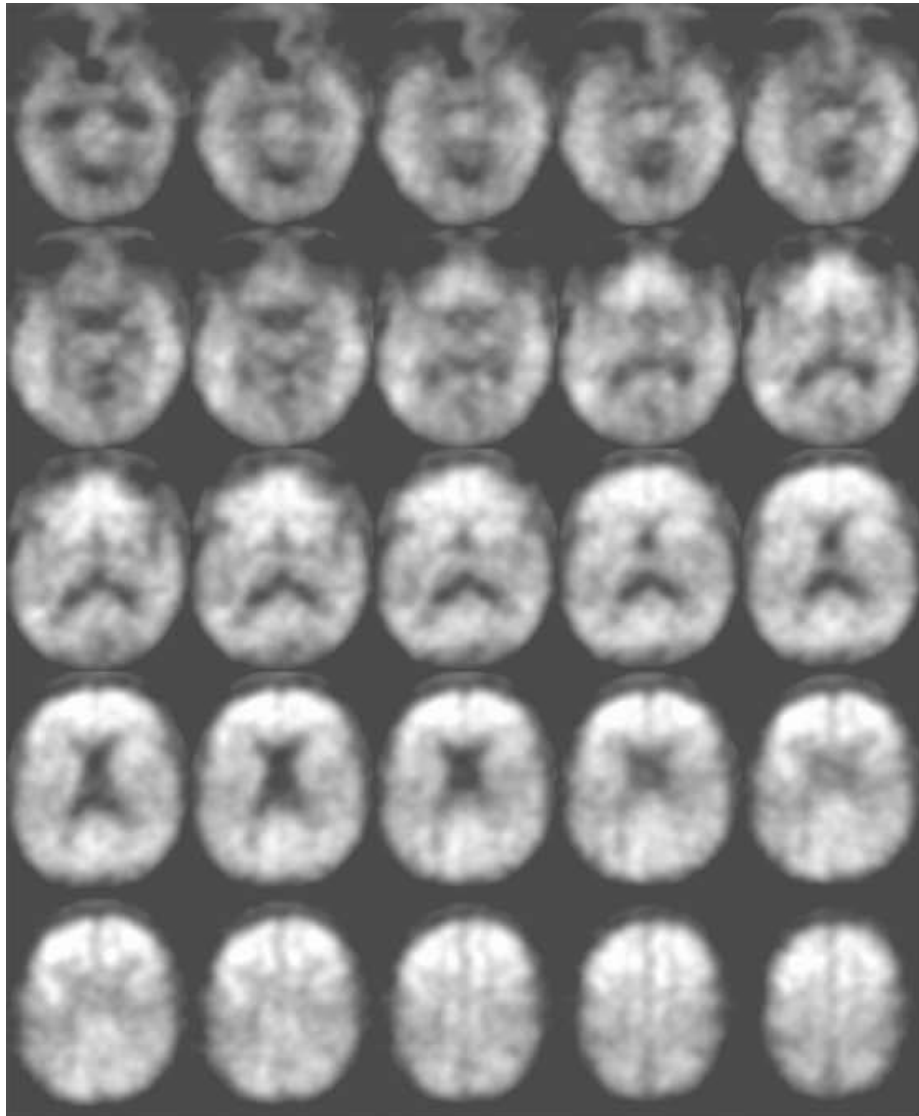
128_0266 AD

Subject ID	Group	ACG	FRC	LTC	PAR	PRC	MTC	OCC	OCP	PON	AVS	CER	SMC	SWM	THL
128_0266	AD	1.81	2.06	1.67	1.80	2.08	0.87	1.27	1.31	1.30	1.69	1.00	1.49	1.58	0.89



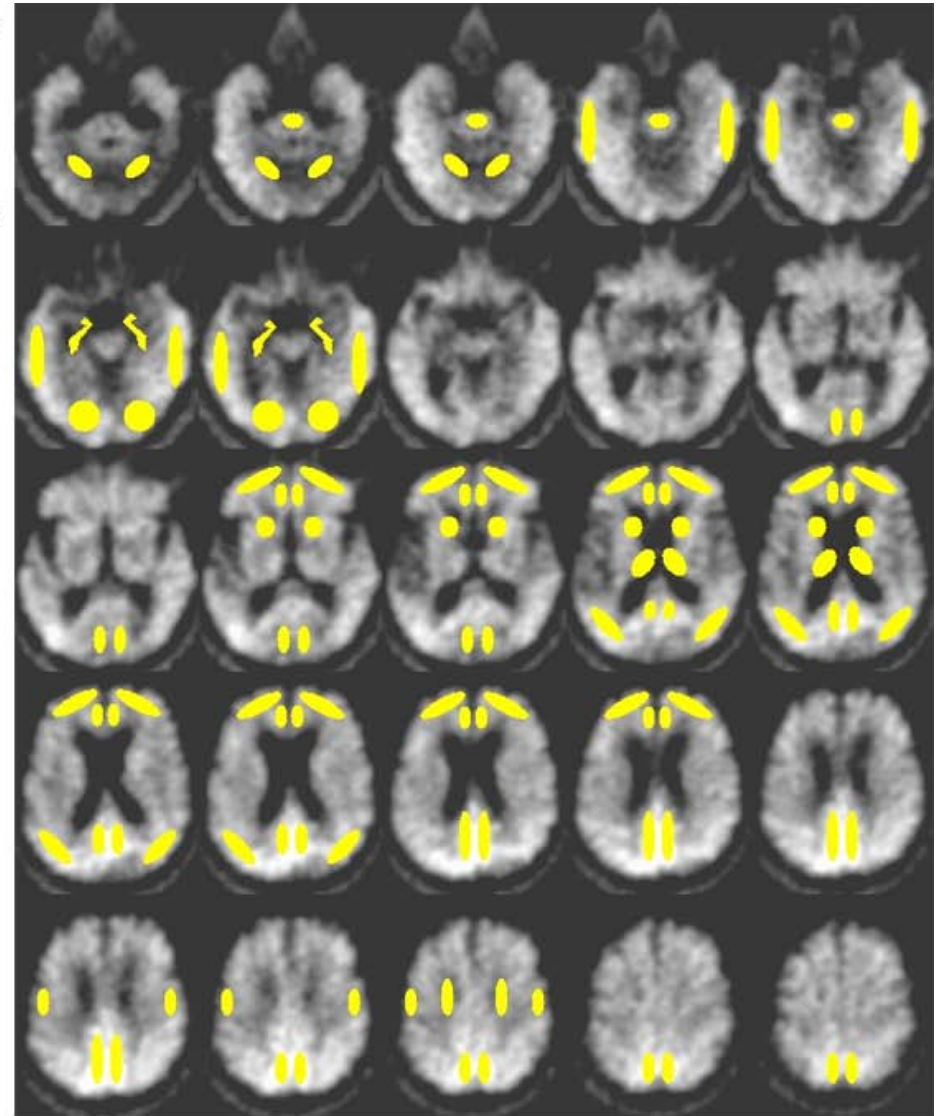
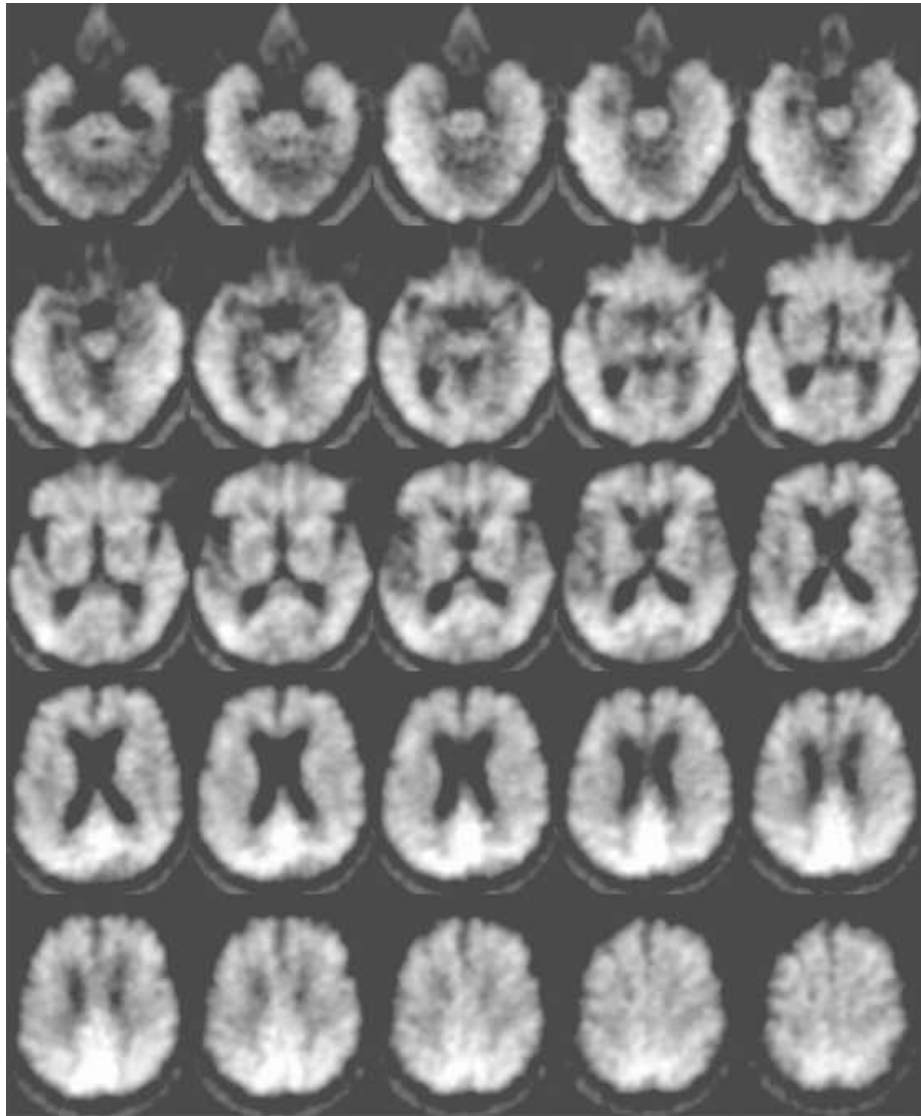
128_1409 AD

Subject ID	Group	ACG	FRC	LTC	PAR	PRC	MTC	OCC	OCP	PON	AVS	CER	SMC	SWM	THL
128_1409	AD	2.29	2.48	2.17	2.24	2.28	1.09	1.51	1.63	1.47	2.02	1.00	1.83	2.00	1.51



128_1430 AD

Subject ID	Group	ACG	FRC	LTC	PAR	PRC	MTC	OCC	OCP	PON	AVS	CER	SMC	SWM	THL
128_1430	AD	2.48	2.06	1.85	1.92	1.98	1.12	1.44	1.47	1.56	2.14	1.00	1.46	1.82	1.50



137_1041 AD

Subject ID	Group	ACG	FRC	LTC	PAR	PRC	MTC	OCC	OCP	PON	AVS	CER	SMC	SWM	THL
137_1041	AD	1.75	1.78	2.15	2.24	2.52	0.96	1.75	1.69	1.62	1.73	1.00	1.55	1.47	1.36